



POWER BURNER WATER WALL HOT WATER BOILER

G---R Models, Bent Steel Water Tube

500,000 - 3,080,000 BTUH

Power Gas Fired, Light Oil or Combination

204WW Direct Fired Hot Water Wall Boiler

Temperatures to 380°F
Pressures to 200 PSI

THE PARKER DESIGN

The Parker water tube design offers an extremely efficient, reliable hot water boiler built for the long term with ease of maintenance. The Parker design offers many advantages. Compare ours to the competition.

ADVANTAGES

- Sealed combustion chamber offers efficiencies to 86% with low excess air levels.
- Less heat loss due to Water Wall sealed combustion chamber design.
- Flexible tubes, no thermal shock problems.
- Extra heavy boiler tubes 1-5/16" OD, minimum 0.12" (11GA) heavy thickness steel, built for long term service life.
- Welded tube bundle. No rolled, ferrill fit, or gasket type connections.
- Units up to 3,080,000 BTUH can go through a 35" door.
- Qualifies for Type "B" conventional venting on gas.
- Modular cabinet construction.
- Lighter weight.
- Multiple burner options including Ultra Low NOx

Safety

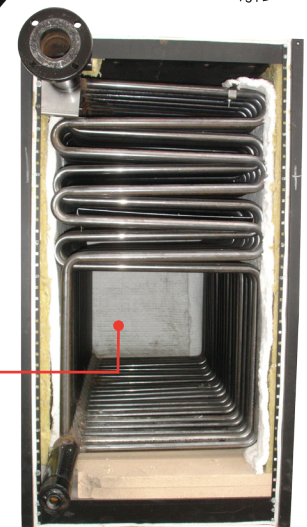
Our ASME tube bundle is extremely flexible and offers a long life with a 25 year warranty against thermal shock. No Parker Boiler has ever been known to experience an internal explosion.

Low Cost Operation

The staggered tubing design provides a 10-pass self-baffled heating surface to increase efficiency

PARKER BOILER CO.

5930 Bandini Boulevard
Los Angeles, CA 90040
Tel (323) 727-9800
Fax (323) 722-2848
www.parkerboiler.com
BROCHURE 204-IV-VI 0J9



Water Wall Furnace

Codes / Approvals

All Parker Hot Water Boilers are manufactured in accordance with the ASME Heating & Power Boiler Codes, and registered with the National Board of Boiler and Pressure Vessel inspectors. The boiler, burner and controls are prewired, factory tested and Listed by a Nationally Recognized Testing Laboratory as Gas, Oil or Combination Gas/Oil Fired Boiler Assemblies to UL Standard 795 & CAN/CGA STD 1-3.1. Oil Fired boilers are Listed per UL 726.

Heavy Insulated Cabinet

The cabinet is durably constructed with heavy steel, insulated with high temperature thermal fiber insulation to effectively reduce heat losses to a minimum.

"Never a Compromise for Quality or Safety"



