

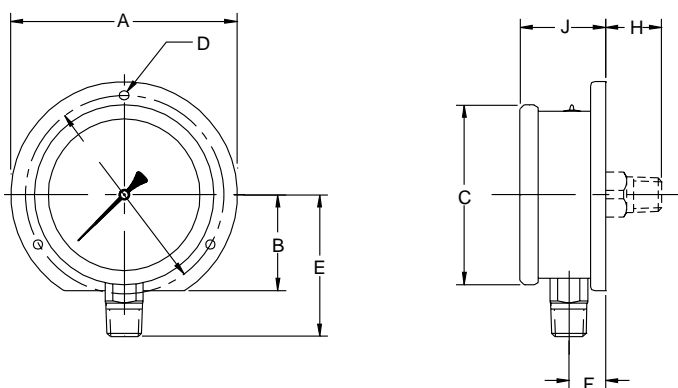
Optional Case Styles

D80 Series

Case Style	Dial Size		
	2"	2 1/2"	4"
Surface Mounted, Back Flange Case for Lower Connection	N/A	SML	SML
Panel Mounted, Front Flange Kit for Back Connection	198-0028	198-0025	198-0027
Panel Mounted, Front Ring Kit for Back Connection	N/A	198-0024	N/A
Panel Mounted, U-Clamp Kit for Back Connection	198-0031	198-0026	198-0029

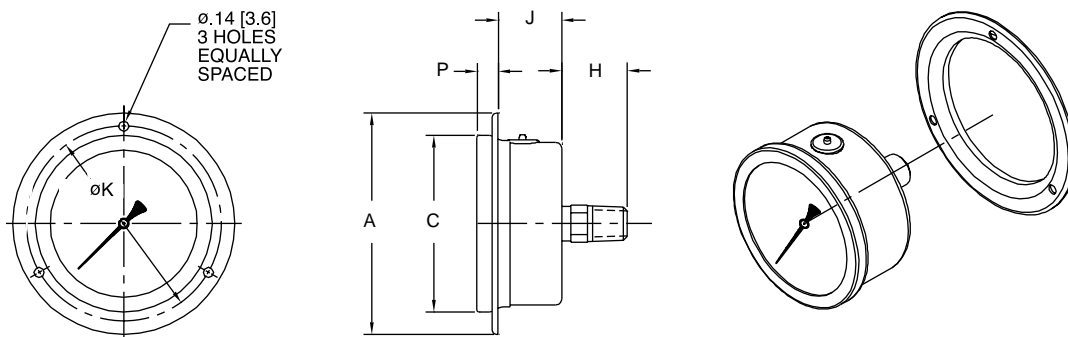
N/A = Not Available. Please order using the code listed.

2 1/2" & 4" Surface Mount



Dial Size	A	B	C	D	E	F	H	J	K
2 1/2"	3.35 [85.1]	1.43 [36.3]	2.68 [68.1]	0.14 [3.6]	2.23 [56.6]	0.52 [13.2]	0.83 [21.1]	1.38 [35.1]	2.96 [75.2]
4"	5.21 [132.3]	2.19 [55.6]	4.18 [106.2]	0.19 [4.8]	2.88 [73.2]	0.62 [15.7]	0.84 [21.3]	1.47 [37.3]	4.56 [115.8]

2", 2 1/2" & 4" Front Flange



Dial Size	A	C	H	J	K	P
2"	3.03 [77]	2.09 [53]	0.99 [25]	0.96 [24]	2.65 [65]	0.32 [8]
2 1/2"	3.35 [85]	2.67 [68]	0.99 [25]	0.82 [21]	2.95 [75]	0.32 [8]
4"	5.20 [132]	4.17 [106]	0.99 [25]	0.91 [23]	4.56 [116]	0.42 [10]

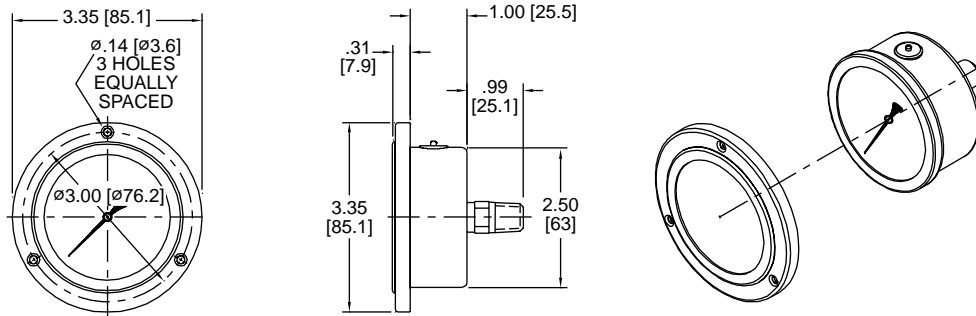
continued next page

Optional Case Styles

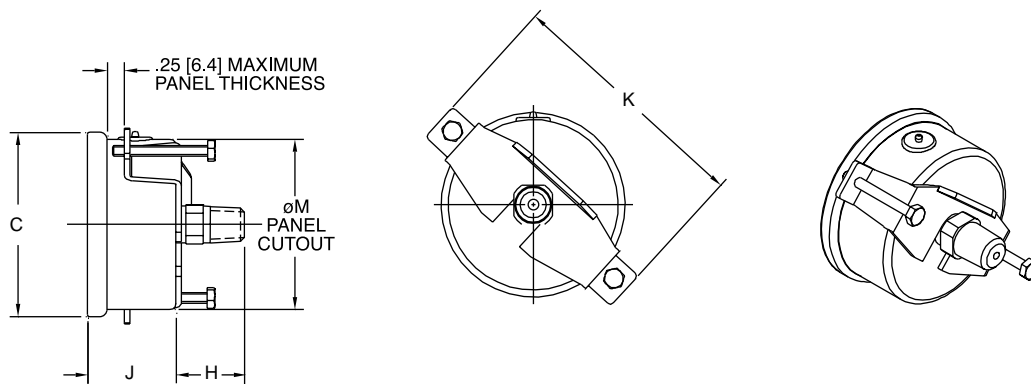
D80 Series continued

All dimensions are nominal.
Dimensions in [] are in millimeters.

2 1/2" Front Ring



2", 2 1/2" & 4" U-Clamp



Dial Size	C	M	J	H	K
2"	2.09 [53]	2.00 [51]	1.10 [28]	0.99 [25]	3.23 [82]
2 1/2"	2.67 [68]	2.50 [63]	1.27 [32]	0.99 [25]	3.70 [94]
4"	4.17 [106]	3.96 [101]	1.32 [34]	0.99 [25]	4.80 [122]