

Local Remote Stations



PK-100

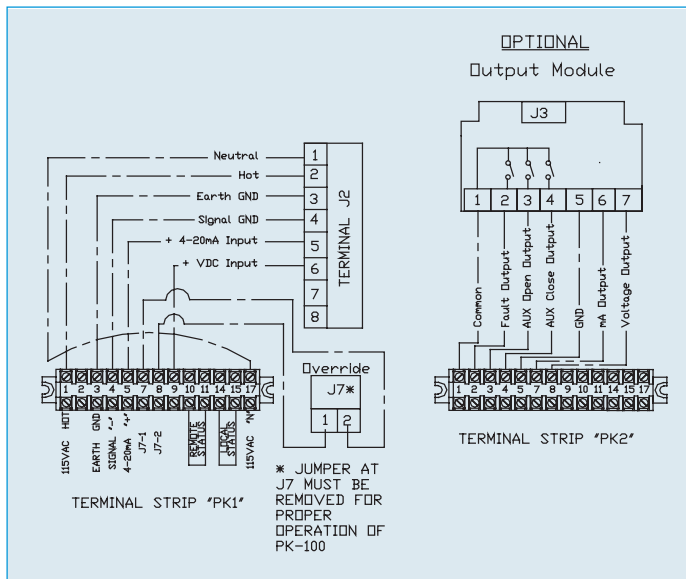
PK-100 is to be used in conjunction with Series 92 or 94, ac powered and DHC-Series positioner card

Standard Features

- Type 4X Enclosure Constructed of Fiberglass Polyester
- Stainless Steel Trim
- Captive Cover Gasket
- Captive Cover Screws
- Two (2) Position Selector Switch (open and close)
- Two (2) Position Selector Switch (local/remote)
- 40°F - 266°F Temperature Range

Options

- Type 7 Enclosure
- 316 Stainless Steel Enclosure
- Contact Factory for Specific Applications



Note:
1. Local Remote Station is not close coupled to actuator.
Field wiring of local remote station to actuator is to be performed by others.



LL-200

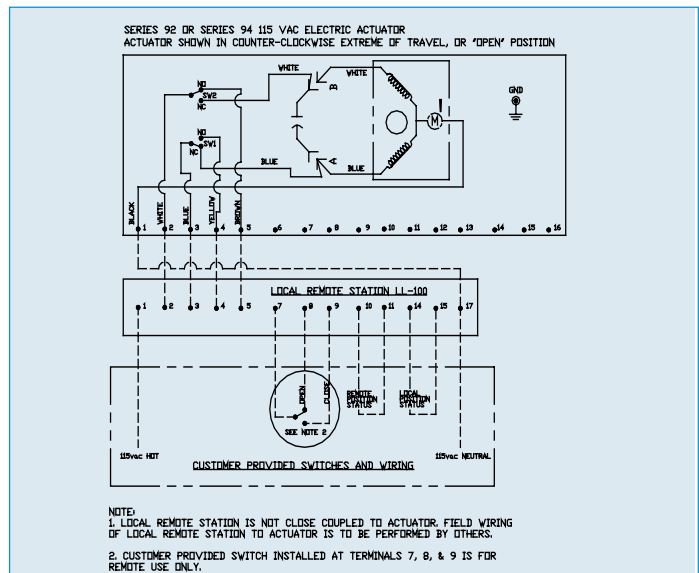
LL-200 is to be used in conjunction with Series 92 or 94, ac powered and On/Off actuator

Standard Features

- Visual Light Indication
- Type 4X Enclosure Constructed of Fiberglass Polyester
- Stainless Steel Trim
- Captive Cover Gasket
- Captive Cover Screws
- Two (2) Position Selector Switch (open and close)
- Three (3) Position Selector Switch (hand, off, auto)
- 40°F - 266°F Temperature Range
- Can be used with any Electric Actuator (must specify before placing order)

Options

- Type 7 Enclosure
- 316 Stainless Steel Enclosure
- Contact Factory for Specific Applications



Note:
1. Local Remote Station is not close coupled to actuator; field wiring of local remote station to actuator is to be performed by others.
2. Customer provided switch installed at Terminals 7, 8, & 9 is for remote use only.