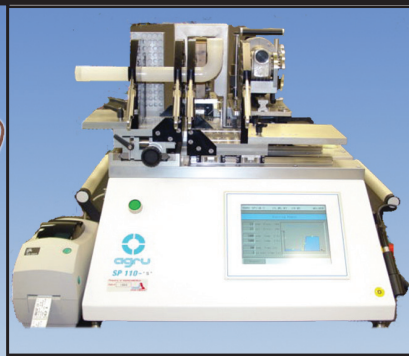
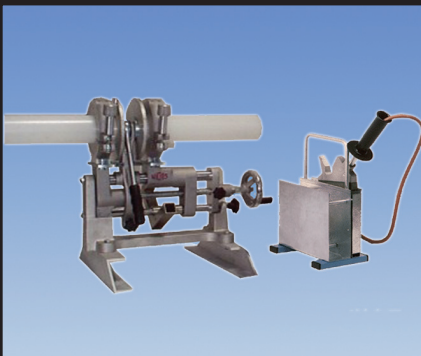


# Welding Equipment

## #WEC-13



Butt Fusion Shop • Hydraulic Trench • Socket Fusion • Electrofusion • IR/Beadless High Purity

**Another  
Corrosion  
Problem  
Solved.™**



**Butt Fusion Shop Welders**

Miniplast: Shop 4, Maxiplast: Shop 6.....	Page 3
Shop 12 Manual (W2500) , Shop 12 Hydraulic.(W4002).....	Page 4
Halar® Bench 6 (W900).....	Page 5

**Hydraulic Trench Machines**

Trench 6 (W4400) , Trench 12 (W4900).....	Page 6
Trench 20 (W5500).....	Page 7

**Socket Fusion Welders**

Bench Socket 4 (W3500).....	Page 8
Ritmo Hand Held Socket 2, Widos Weld-it® Hand Socket.....	Page 9

**Electrofusion Welder**

The Polymatic, XTR400.....	Page 10
Hot Air Welder, Extrusion Star Gun.....	Page 11

**I/R High Purity Welders**

SP 110-S: Fully Automated Welding IR Fusion.....	Page 12
SP 250-S: Fully Automated Welding IR Fusion.....	Page 12
SP 315-S: Fully Automated Welding IR Fusion.....	Page 13
Power Transformer.....	Page 13

**Beadless Welder**

SP 110-B: Fully Automated Beadless Fusion.....	Page 14
HPF Portable Beadless Fusion.....	Page 15

**Accessories**

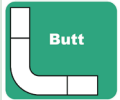
Rotational Scraper 110 & 225, Pipe Beveller SME-1.....	Page 16
Balloons and Heater Bushings.....	Page 17
Electrofusion Couplings.....	Page 18

**Piping Systems**

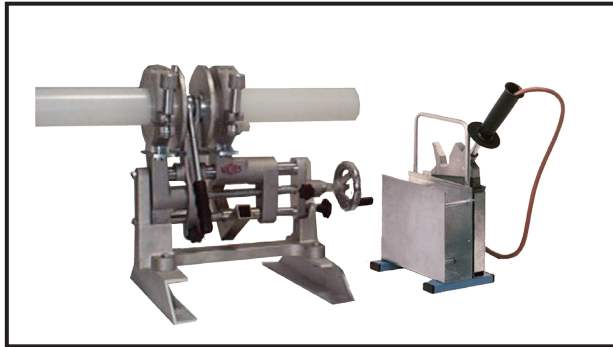
Industrial Piping Systems.....	Page 20
High Purity Piping Systems.....	Page 20
Double Containment Piping Systems.....	Page 21

## Miniplast: Shop 4

**Purchase Part Number 5730000**  
**Rental Part Number 9730000**



### Compact Manual Butt Fusion



<b>Size Range</b>	20mm - 110mm (1/2" - 4")
<b>Piping</b>	Single & Double Wall
<b>Materials</b>	PE, PP, PVDF
<b>Power</b>	110v
<b>Dimensions</b>	21"x27"x19"
<b>Weight</b>	100 lbs.
<b>Shipping Dimensions</b>	48"x40"x23"
<b>Shipping Weight</b>	150 lbs.

#### Features

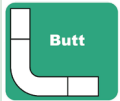
- Horizontal and vertical adjustment
- Compact design
- Ability to make angle welds and miter joints
- Built-in force gauge
- Removable from base for field operation
- 1x2, 2x3 Poly-Flo® inserts

#### Options

- IPS Inserts 1/2" - 3"
- 1x3 annular heating element
- 2x4 annular heating element
- Electric planer

## Maxiplast: Shop 6

**Purchase Part Number 5622000**  
**Rental Part Number 9622000**



### Manual Butt Fusion



<b>Size Range</b>	50mm - 160mm (1-1/2" - 6")
<b>Piping</b>	Single & Double Wall
<b>Materials</b>	PE, PP, PVDF
<b>Power</b>	110v
<b>Dimensions</b>	36"x25"x38"
<b>Weight</b>	250 lbs.
<b>Shipping Dimensions</b>	48"x40"x35"
<b>Shipping Weight</b>	300 lbs.

#### Features

- Horizontal and vertical adjustment
- Compact design
- Ability to make angle welds and miter joints
- Electric planer standard
- Built-in force gauge
- Removable from base for field operation
- 1x2, 2x3, 4x6 Poly-Flo® inserts

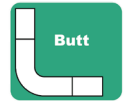
#### Options

- 125mm, 140mm inserts
- 3 x 6 annular mirror
- IPS inserts 1-1/2" - 6"

Please consult Asahi/America's Welding Equipment Price Sheet for purchase and rental rates for all equipment and options.

## Shop 12 Manual (W2500)

**Purchase Part Number 5722000**  
**Rental Part Number 9722000**



### Manual Butt Fusion



<b>Size Range</b>	50mm - 315mm (1-1/2" - 12")
<b>Piping</b>	Single & Double Wall
<b>Materials</b>	PE, PP, PVDF
<b>Power</b>	110v
<b>Dimensions</b>	38"x27"x41"
<b>Weight</b>	475 lbs.
<b>Shipping Dimensions</b>	48"x40"x45"
<b>Shipping Weight</b>	625 lbs.

#### Features

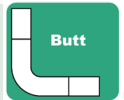
- Suitable for sanitary installations & waste pipes
- Built-in force gauge
- Ideal for shop operation
- Horizontal and vertical adjustment
- 4x6 Poly-Flo® inserts

#### Options

- IPS inserts 3" - 10"
- 3x6, 4x8, 6x10, 8x12 annular heating element

## Shop 12 Hydraulic (W4002)

**Purchase Part Number 5790000**  
**Rental Part Number 9790000**



### Hydraulic Butt Fusion



<b>Size Range</b>	90mm - 315mm (3" - 12")
<b>Piping</b>	Single & Double Wall
<b>Materials</b>	PE, PP, PVDF
<b>Power</b>	220v / 30 Amp / 3 ph
<b>Dimensions</b>	50"x42"x50"
<b>Weight</b>	800 lbs
<b>Shipping Dimensions</b>	62"x55"x68"
<b>Shipping Weight</b>	1100 lbs

#### Features

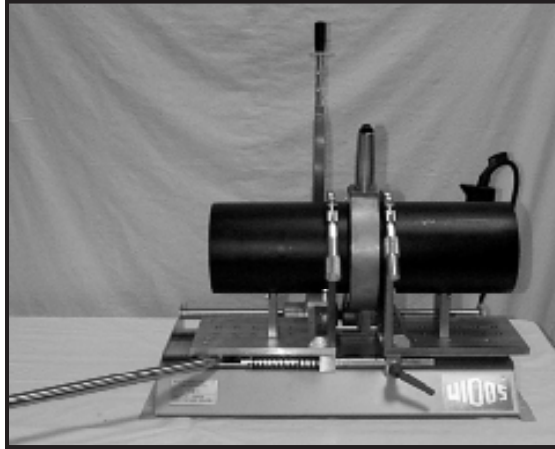
- Electro-hydraulic force control
- Robust frame for shop installations
- Designed for SDR11 thick wall pressure pipe
- Suitable for Chem Proline®, Proline® & Duo Pro®
- Ideal for shop operation

## Halar® Bench 6 (W900)

**Purchase Part Number 5773000**  
**Rental Part Number 9773000**



### Manual Butt Fusion for Halar® (E-CTFE)



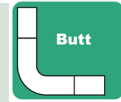
<b>Size Range</b>	50mm - 160mm (1-1/2" - 6")
<b>Piping</b>	Single Wall
<b>Materials</b>	Halar® (E-CTFE)
<b>Power</b>	110v
<b>Dimensions</b>	32"x21"x36"
<b>Weight</b>	180 lbs.
<b>Shipping Dimensions</b>	33"x23"x36"
<b>Shipping Weight</b>	180 lbs.

#### Features

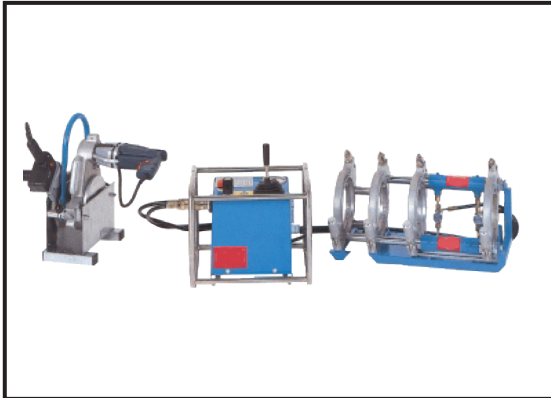
- High temp heating plate for Halar® welds
- Lever action for quick change over time
- Thin master clamps for keeping tight fabrication dimensions
- Built-in force gauge
- Ideal for shop operation

## Trench 6 (W4400)

**Purchase Part Number 5792000**  
**Rental Part Number 9792000**



### Compact Trench Butt Fusion



<b>Size Range</b>	50mm - 160mm (1-1/2" - 6")
<b>Piping</b>	Single & Double Wall
<b>Materials</b>	PE, PP, PVDF
<b>Power</b>	230v / 20 Amp
<b>Dimensions</b>	25"x14"x14"
<b>Weight</b>	50 lbs.
<b>Shipping Dimensions</b>	33"x33"x26"
<b>Shipping Weight</b>	320 lbs.

#### Features

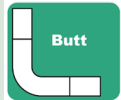
- Compact design
- Rugged frame for industrial applications
- Adjustable speed to control change over time
- Adjustable heating element temperatures
- Powerful planer with safety shut-off switch
- Lever actuated operation
- Vertical or horizontal welds
- 1x2, 2x3, 4x6 Poly-Flo® inserts

#### Options

- IPS inserts 1-1/2" - 4"

## Trench 12 (W4900)

**Purchase Part Number 5793000**  
**Rental Part Number 9793000**



### Trench Butt Fusion



<b>Size Range</b>	90mm - 315mm (3" - 12")
<b>Piping</b>	Single & Double Wall
<b>Materials</b>	PE, PP, PVDF
<b>Power</b>	230v / 20 Amp
<b>Dimensions</b>	34"x22"x22"
<b>Weight</b>	114 lbs.
<b>Shipping Dimensions</b>	40"x48"x24"
<b>Shipping Weight</b>	900 lbs.

#### Features

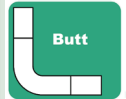
- Compact design
- Rugged frame for industrial applications
- Adjustable speed to control change over time
- Adjustable heating element temperatures
- Powerful planer with safety shut-off switch
- Lever actuated operation
- Vertical or horizontal welds

#### Options

- IPS inserts 3" - 10"
- Built-in force gauge

## Trench 20 (W5500)

**Purchase Part Number 5676000**  
**Rental Part Number 9676000**



### Trench Butt Fusion



<b>Size Range</b>	200mm - 500mm (8" - 20")
<b>Piping</b>	Single & Double Wall
<b>Materials</b>	PE, PP, PVDF
<b>Power</b>	230v / 3ph / 30 Amp
<b>Dimensions</b>	48"x38"x38"
<b>Weight</b>	300 lbs.
<b>Shipping Dimensions</b>	54"x50"x69
<b>Shipping Weight</b>	1545 lbs

### Features

- Compact design
- Rugged frame for industrial applications
- Adjustable speed to control change over time
- Adjustable heating element temperatures
- Powerful planer with safety shut-off switch
- Lever actuated operation
- Vertical or horizontal welds

### Options

- IPS inserts 8" - 18"

Please consult Asahi/America's Welding Equipment Price Sheet for purchase and rental rates for all equipment and options.

## Bench Socket 4 (W3500)\*

**Purchase Part Number 5711000**  
**Rental Part Number 9711000**



### Bench Top Socket Welding Machine



<b>Size Range</b>	20mm - 110mm (1/2" - 4")
<b>Piping</b>	Single Wall
<b>Materials</b>	PE, PP, PVDF
<b>Power</b>	110v
<b>Dimensions</b>	28"x20"x15"
<b>Weight</b>	98 lbs.
<b>Shipping Dimensions</b>	32"x47"x28"
<b>Shipping Weight</b>	240 lbs.

#### Features

- Smooth operation with rack-and-pinion mechanism
- Heating element is built into the machine
- Adjustable depth stop
- Ideal for shop operation
- Equipped with bevelling tool

#### Options

- Heater bushings (see page 17)

#### \* Notes

**Heater inserts included with purchase**

**Heater inserts must be purchased for rental machines**

**See page 17 for list of heater bushings and sizes**

Please consult Asahi/America's Welding Equipment Price Sheet for purchase and rental rates for all equipment and options.

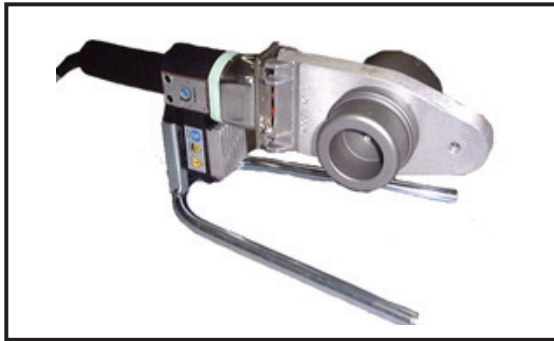


## Ritmo Hand Held Socket 2\*

**Purchase Part Number 5687001**  
**Rental Part Number 9687001**



### Hand Held Socket Fusion Tool



<b>Size Range</b>	20mm - 63mm (1/2" - 2")
<b>Piping</b>	Single Wall
<b>Materials</b>	PE, PP, PVDF
<b>Power</b>	110v
<b>Dimensions</b>	18"x14"x5-1/2"
<b>Weight</b>	15 lbs.

#### Features

- Light weight durable hand tool
- Convenient table clamp and stand

#### Options

- Beveller tool (SME-1) (see page 16)
- Heater bushings (see page 17)

#### \* Note

Heater inserts not included with purchase or rental

## Widos Weld-it® Hand Socket\* Part Number 5687002



### Hand Held Socket Fusion Tool



<b>Size Range</b>	20mm - 63mm (1/2" - 2")
<b>Piping</b>	Single Wall
<b>Materials</b>	PE, PP, PVDF
<b>Power</b>	110v
<b>Dimensions</b>	15"x6"
<b>Weight</b>	3.75 lbs.
<b>Weight w/case</b>	15 lbs.

#### Features

- Lightweight, durable hand tool
- Convenient table clamp
- Adjustable heating element, with digital indicator
- Ideal for shop or field operation

#### Options

- Beveller tool (SME-1) (see page 16)
- Heater bushings (see page 17)

#### \* Note

Heater inserts not included with purchase or rental

**See page 17 for list of heater bushings and sizes**

Please consult Asahi/America's Welding Equipment Price Sheet for purchase and rental rates for all equipment and options.

# Polymatic\*

**Purchase Part Number 5830000**  
**Rental Part Number 9830000**



## Electrofusion Welder



<b>Size Range</b>	All electrofusion fittings up to 48 volt
<b>Piping</b>	Single Wall
<b>Materials</b>	PE, PP
<b>Power</b>	110v
<b>Dimensions</b>	21"x27"x19"
<b>Weight</b>	40 lbs.
<b>Shipping Dimensions</b>	21"x27"x19"
<b>Shipping Weight</b>	150 lbs.

### Features

- Parameters are set using a bar code
- Safe and reliable fusion
- Tough thermoplastic housing that resists damage due to moisture
- Ideal for shop or field operation
- 25-110mm scrapping tool

### Options

- 90-225mm scrapping tool
- 220V tool available
- Requires couplings (see page 18)

**\* Note**

Scraper is included, must specify size (see page 16)

# XTR400\*

**Purchase Part Number 5830001**  
**Rental Part Number 9830001**



## Electrofusion Welder



<b>Size Range</b>	20mm - 400mm (1/2" - 16")
<b>Piping</b>	Single Wall
<b>Materials</b>	PE, PP
<b>Power</b>	110v, 4,000w
<b>Dimensions</b>	21"x17.5"x9"
<b>Weight</b>	50 lbs.
<b>Shipping Dimensions</b>	21"x17.5"x9"
<b>Shipping Weight</b>	50 lbs.

### Features

- Barcode gun reads fitting label
- USB input for downloading up to 500 complete welds
- Large graphic display with easy manual input
- Alligator pins eliminates electrical connection from slipping
- 20-400mm scrapping tool

### Options

- Requires couplings (see page 18)

**\* Note**

Scraper is included, must specify size (see page 16)

Please consult Asahi/America's Welding Equipment Price Sheet for purchase and rental rates for all equipment and options.

## Hot Air Welder\*

**Purchase Part Number 5638000**  
**Rental Part Number 9638000**



### Manual Hand Held Bead Welding Tool



**Size Range** 3mm-4mm  
**Materials** PFA, PVC, PE, PP, PVDF, E-CTFE  
**Power** 110v

**Dimensions** 21"x27"x19"  
**Weight** 5 lbs.  
**Shipping Dimensions** 21"x27"x19"  
**Shipping Weight** 5 lbs.

#### Features

- Built in motor with air cooler
- Adjustable from 20 - 600°C (68-1112°F)
- Ideal for light fabrication
- Supplied with spread tacking tip 4mm

#### Options

- Various sizes and style tips available

## Extrusion Star Gun

**Purchase Part Number 5640000**  
**Rental Part Number 9640000**



### Manual Hand Held Extrusion Welding Tool



**Rod Size Range** 3-5mm (1/8" - 3/16")  
**Materials** PE, PP, PVDF, E-CTFE  
**Power** 230v

**Dimensions** 20" x 12" x 4-1/2"  
**Weight** 50 lbs.  
**Shipping Dimensions** 24"x13"x 8"  
**Shipping Weight** 60 lbs.

#### Features

- Self contained built in motor with w/variable welding speed
- Ideal for light\* industrial fabrication of PP,PE & PVDF

#### \* Note

**Consult factory for a separate unit (9650000) also available for heavy fabrication**

Please consult Asahi/America's Welding Equipment Price Sheet for purchase and rental rates for all equipment and options.

## SP 110-S

**Purchase Part Number 5861001**  
**Rental Part Number 9861001**



### Fully Automated IR Butt Welding Tool



<b>Size Range</b>	20mm - 110mm (1/2" - 4")
<b>Piping</b>	Single Wall
<b>Materials</b>	PP, PPn, PVDF, E-CTFE
<b>Power</b>	Plug-110v Tool-230v / 15 Amp
<b>Dimensions</b>	29-9/16x35-3/8x25
<b>Weight</b>	198 lbs.
<b>Shipping Dimensions</b>	61"x39"x40"
<b>Shipping Weight</b>	670 lbs.

#### Features

- Automated planing depth feature
- Automated fusion process
- Internal validation program
- Printer and cleanroom labels
- 110 to 230 VAC power converter
- Ideal for shop operation

#### Options

- PFA capable tool
- SP 110-S operator card

## SP 250-S

**Purchase Part Number 5869001**  
**Rental Part Number 9869001**



### Fully Automated IR Butt Welding Tool



<b>Size Range</b>	110mm - 250mm (4" - 10")
<b>Piping</b>	Single Wall
<b>Materials</b>	PP, PVDF
<b>Power</b>	208v / 3ph / 30 Amp
<b>Dimensions</b>	36"x56"x58"
<b>Weight</b>	1635 lbs.
<b>Shipping Dimensions</b>	37"x56"x58"
<b>Shipping Weight</b>	1960 lbs.

#### Features

- Automated planing depth feature
- Automated fusion process
- Internal validation program
- Printer and cleanroom labels
- Ideal for shop operation

#### Options

- SP 250-S operator card
- 208 to 400 power converter (see page 13)

## SP 315-S

**Purchase Part Number 5869315**  
**Rental Part Number 9869315**



### Fully Automated IR Butt Welding Tool



**Size Range** 110mm - 315mm (4" - 12")  
**Piping** Single Wall  
**Materials** PP, PVDF  
**Power** 220v / 3ph / 30 Amp

**Dimensions** 42"x67"x58"  
**Weight** 1400 lbs.  
**Shipping Dimensions** 42"x67"x58"  
**Shipping Weight** 2866 lbs.

#### Features

- Automated planing depth feature
- Automated fusion process
- Internal validation program
- Printer and cleanroom labels
- Ideal for shop operation

#### Options

- SP 315-S operator card
- 208 to 400 power converter

## Power Transformer\*

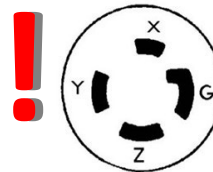
**Purchase Part Number 5869003**  
**Rental Part Number 9869003**



### SP 250-S Power Transformer -15 KVA



**Power** 208v / 3ph / 30 Amp



Required receptacle  
 208, 3 phase

**Dimensions** 26"x16"x21"  
**Weight** 275 lbs.  
**Shipping Dimensions** 40"x48"x27"  
**Shipping Weight** 300 lbs.

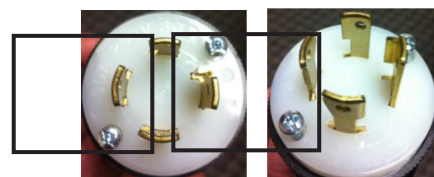
#### Terms of usage

- Use with a dedicated line
- Must be wired by a licensed electrician
- Contact Asahi/America for further information on installation
- Must be ordered at time of tool rental
- Ideal for shop operation

#### \* Note

Model shipped may differ from pictured unit above based on availability.

#### Comes with NEMA L15-30P



**SP 110-B\***

**Purchase Part Number 5786100**  
**Rental Part Number 9786100**



**Beadless Welding Fusion Machine**



<b>Size Range</b>	20mm - 63mm (1/2" - 2")
<b>Piping</b>	Single Wall
<b>Materials</b>	PP, PPn, PVDF
<b>Power</b>	110v / 15 Amp
<b>Dimensions</b>	26-9/16x35-3/8x25
<b>Weight</b>	198 lbs.
<b>Shipping Dimensions</b>	61"x39"x40"
<b>Shipping Weight</b>	670 lbs.

**Features**

- Internal validation program
- Provides several QA sources
- Printer and cleanroom labels
- 110 to 230 VAC power converter
- Ideal for shop operation

**Options**

- Balloons for PP or PVDF (see page 18)
- SP 110-B operator card

**\* Notes**

**Requires Balloons**

**SP 110-B machine requires specific head to operate.  
 Please consult chart below for sizes and part numbers**

**SP 110-B Beadless Heads**



Size	Inches	Purchase Part Number	Rental Part Number
20mm	1/2	5786120	9786120
25mm	3/4	5786125	9786125
32mm	1	5786132	9786132
40mm	1-1/4	5786140	9786140
50mm	1-1/2	5786150	9786150
60mm	2	5786160	9786160

Please consult Asahi/America's Welding Equipment Price Sheet for purchase and rental rates for all equipment and options.

## HPF Portable Beadless

**Purchase Part Number 5786000**  
**Rental Part Number 9786000**



### PVDF Electrofusion Welder



<b>Size Range</b>	20mm - 63mm (1/2" - 2")
<b>Piping</b>	Single Wall
<b>Materials</b>	PVDF
<b>Power</b>	110v / 15 Amp

<b>Dimensions</b>	26"x19"x17"
<b>Weight</b>	100 lbs.
<b>Shipping Dimensions</b>	43"x37"x28"
<b>Shipping Weight</b>	365 lbs.

#### Features

- Extremely portable
- 7 foot cable leads that are able to reach difficult areas
- Bar code entry sets parameters for each diameter
- Internal bead is eliminated using an inflatable balloon

#### Options

- Balloons for PVDF (see page 18)

# Socket Welding PREP Tool Part Number 58115600

**Planing Tool**



## Peel Remove Edge Plane

Natural oxidation occurs on polyolefin thermoplastics and must be removed in order to achieve the best bonding between pipe and socket fittings. Asahi's PREP tool effortlessly removes oxidation while planing and adds a bevel to the insertion face of the pipe. An added benefit of the one-step process is the marking of the desired insertion depth.

**Features**

- Quickly "PREP" pipe for socket welding
- Easy to use, impossible to misuse
- Marks insertion depth directly on pipe
- Maintenance-free operation
- Completely removes surface oxidation from PE, PP
- Reduces installation time with only one operation
- In accordance with DVS & ASTM Type B socket standards

Complete Kit	
Item	Part Number
20-63mm Kit	581156000

**Complete Kit includes:**

- 20-63mm PREP tool with blades
- Manual handles (2pc)
- Driver nut
- Storage case

Item	Part Number
Handel (2 pc)	581155045
Driver Nut	581155042
Screw (2 pc)	581155001



Hand Unit		
Size		Part Number
mm	Inches	
20	1/2	581156005
25	3/4	581156007
32	1	581156010
40	1-1/4	581156012
50	1-1/2	581156015
60	2	581156020

Spare Blades (1 set + 3 pc)		
Size		Part Number
mm	Inches	
20	1/2	581155006
25	3/4	581155008
32	1	581155011
40	1-1/4	581155013
50	1-1/2	581155016
60	2	581155021



# Socket Welding PREP Tool Part Number 58115600

**Planing Tool**



## Peel Remove Edge Plane

Natural oxidation occurs on polyolefin thermoplastics and must be removed in order to achieve the best bonding between pipe and socket fittings. Asahi's PREP tool effortlessly removes oxidation while planing and adds a bevel to the insertion face of the pipe. An added benefit of the one-step process is the marking of the desired insertion depth.

**Features**

- Quickly "PREP" pipe for socket welding
- Easy to use, impossible to misuse
- Marks insertion depth directly on pipe
- Maintenance-free operation
- Completely removes surface oxidation from PE, PP
- Reduces installation time with only one operation
- In accordance with DVS & ASTM Type B socket standards

Complete Kit	
Item	Part Number
20-63mm Kit	581156000

**Complete Kit includes:**

- 20-63mm PREP tool with blades
- Manual handles (2pc)
- Driver nut
- Storage case

Item	Part Number
Handel (2 pc)	581155045
Driver Nut	581155042
Screw (2 pc)	581155001

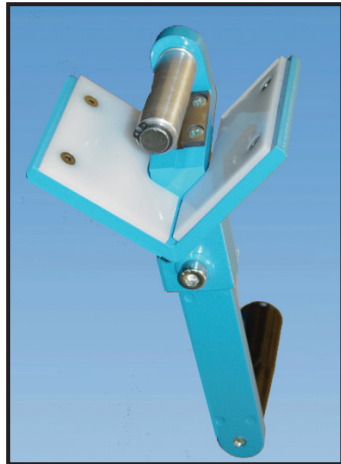


Hand Unit		
Size		Part Number
mm	Inches	
20	1/2	581156005
25	3/4	581156007
32	1	581156010
40	1-1/4	581156012
50	1-1/2	581156015
60	2	581156020

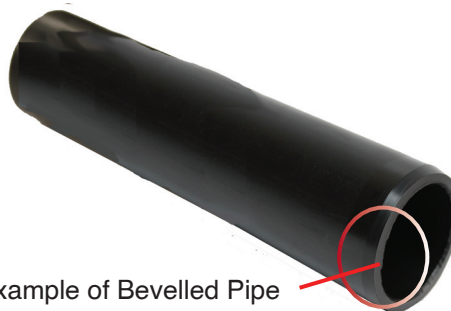
Spare Blades (1 set + 3 pc)		
Size		Part Number
mm	Inches	
20	1/2	581155006
25	3/4	581155008
32	1	581155011
40	1-1/4	581155013
50	1-1/2	581155016
60	2	581155021

# Pipe Beveller SME-1 Part Number 5686003

## Beveling Tool



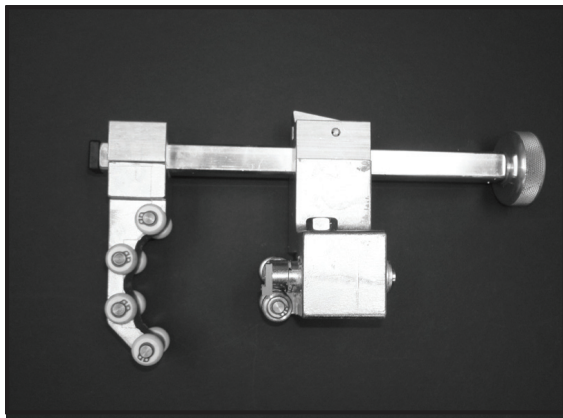
The SME-1 tool is ideal for beveling the ends of plastic pipes up to 63mm (2") that will be inserted into socket fusion coupling.



Example of Bevelled Pipe

# Rotational Scrapers PFR 110 - Part Number 5831110 PFR 225 - Part Number 5832225

## Electrofusion Scraping Tool

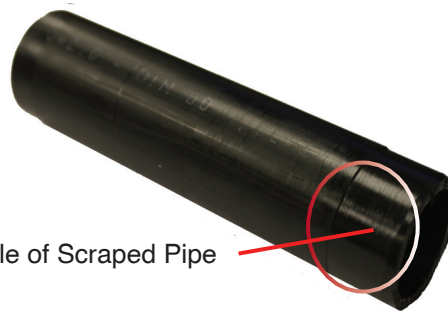


Asahi/America offers a wide range of scraping tools for a variety of sizes and applications. Please consult us for the best recommendation.

<b>Size Ranges</b>	PFR 110	25mm - 110mm (3/4" - 4")
	PFR 225	90mm - 225mm (3" - 9")

### Features

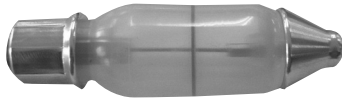
- Adjustable depth
- Self feeding



Example of Scraped Pipe

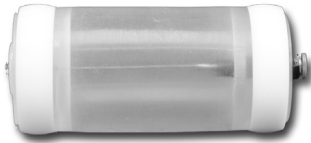
Please consult Asahi/America's Welding Equipment Price Sheet for purchase and rental rates for all equipment and options.

## SP and HPF Balloons



SP Balloon

SP 110-B BALLOONS				
mm	Size		PP Balloon Part Number	PVDF Balloon Part Number
	inch			
20	1/2		5788405	5788305
25	3/4		5788407	5788307
32	1		5788410	5788310
40	1-1/4		5788412	5788312
50	1-1/2		5788415	5788315
63	2		5788420	5788320



HPF Balloon

HPF ELECTROFUSION BALLOONS			
mm	Size		Part Number
	inch		
20	1/2		5788005
25	3/4		5788007
32	1		5788010
40	1-1/4		5788012
50	1-1/2		5788015
63	2		5788020

## Socket Heater Bushings



Heater Bushings

SOCKET HEATER BUSHINGS			
mm	Size		Part Number
	inch		
20	1/2		5797005
25	3/4		5797007
32	1		5797010
40	1-1/4		5797012
50	1-1/2		5797015
63	2		5797020
75	2-1/2		5797025
90	3		5797030
110	4		5797040

# Electrofusion Couplings



**PVDF  
Electrofusion  
Coupling**

HPF PVDF ELECTROFUSION COUPLINGS		
Size		Part Number
mm	inch	
20	1/2	5479005
25	3/4	5479007
32	1	5479010
40	1-1/4	5479012
50	1-1/2	5479015
63	2	5479020



**Proline®  
Electrofusion  
Coupling**

POLYMATIC PROLINE® ELECTROFUSION COUPLINGS		
Size		Part Number
mm	inch	
20	1/2	5077005
25	3/4	5077007
32	1	5077010
40	1-1/4	5077012
50	1-1/2	5077015
63	2	5077020
90	3	5077030
110	4	5077040

## Electrofusion Couplings



**Chem Proline®  
Electrofusion  
Coupling**

POLYMATIC CHEM PROLINE® ELECTROFUSION COUPLINGS		
Size		Part Number
mm	inch	
20	1/2	581117005
25	3/4	581117007
32	1	581117010
50	1-1/2	581117015
63	2	581117020
90	3	581117030
63	4	581117040



**Air-Pro®  
Electrofusion  
Coupling**

POLYMATIC AIR-PRO® ELECTROFUSION COUPLINGS		
Size		Part Number
mm	inch	
20	1/2	5817005
25	3/4	5817007
32	1	5817010
40	1-1/4	5817012
50	1-1/2	5817015
63	2	5817020
90	3	5817030
110	4	5817040
160	6	5817060
200	8	5817080
250	10	5817100
315	12	5817120

# Single Wall Industrial Piping Systems



## Supply Range Pipe and Fittings

- 50 - 315mm (1/2" - 12")  
SDR11, 150psi



## Valves

- T-21 Ball Valves: 20 - 63mm (1/2" - 2")
- T-57 Butterfly Valves: 50 - 315mm (1-1/2" - 12")
- T-14 Diaphragm Valves: 20 - 63mm (1/2" - 2")
- Ball Check Valves: 20 - 63mm (1/2" - 2")

## Welding

- Butt, Socket, Electrofusion

## Proline® (PP)

### Supply Range Pipe and Fittings

- 20 - 1200mm (1/2" - 48")  
SDR11, 150psi
- 110 - 1400mm (4" - 55")  
SDR33, 45psi



## Valves

- T-21 Ball Valves: 20 - 110mm (1/2" - 4")
- T-57 Butterfly Valves: 50 - 1400mm (1-1/2" - 55")
- T-14/15/G Diaphragm Valves: 20 - 200mm (1/2" - 10")
- Ball Check Valves: 20 - 110mm (1/2" - 4")
- Frank Series Regulating Valves: 20 - 110mm (1/2" - 4")

## Welding

- Butt, Socket, Electrofusion

## Ultra Proline® (E-CTFE/Halar®)

### Supply Range Pipe and Fittings

- 20 - 50mm (1/2" - 1-1/2")  
SDR21, 150psi
- 63-110mm (2" - 4")  
SDR21, 120psi



## Valves

- T-21 Ball Valves: 20 - 32mm (1/2" - 1")
- T-342 Diaphragm Valves: 20 - 63mm (1/2" - 2")
- Frank Series Regulating Valves: 20 - 63mm (1/2" - 2")

## Welding

- Butt

## Super Proline® (PVDF)

### Supply Range Pipe and Fittings

- 20 - 315mm (1/2" - 12")  
SDR21, 230psi
- 90 - 400mm (3" - 16")  
SDR33, 150psi



## Valves

- T-21 Ball Valves: 20 - 110mm (1/2" - 4")
- T-57 Butterfly Valves: 50 - 315mm (1-1/2" - 12")
- T-14 Diaphragm Valves: 20 - 63mm (1/2" - 4")
- Ball Check Valves: 20 - 110mm (1/2" - 4")
- Frank Series Regulating Valves: 20 - 75mm (1/2" - 2-1/2")

## Welding

- Butt, Socket

## Air-Pro®

### Compressed Air Piping

#### Supply Range Pipe and Fittings

- 20 - 110mm (1/2" - 4")  
SDR 7.4 / 230psi
- 160 - 315mm (6" - 12")  
SDR 11 / 160psi



## Valves

- Ball Valves: 20 - 90mm (1/2" - 3")

## Welding

- Butt, Socket, Electrofusion

## High Purity Piping Systems

## Double Wall Piping Systems

### Purad® (Ultra High Purity PVDF)

#### Supply Range

#### Pipe and Fittings

- 20 - 315mm (1/2" - 12")  
SDR 21 / PN 16 / 230psi
- 90 - 315mm (3" - 12")  
SDR 33 / PN 10 / 150psi



#### Valves

- T-342 Diaphragm Valves: 20 - 110mm (1/2" - 4")
- T-343 Zero Dead Leg (ZDL) Valve: 20 - 110mm (1/2" - 4")  
*Over 49 different sizes and configurations*
- T-21 Ball Valves: 20 - 110mm (1/2" - 4")
- Frank Series Regulating Valves: 20 - 75mm (1/2" - 2-1/2")

#### Welding

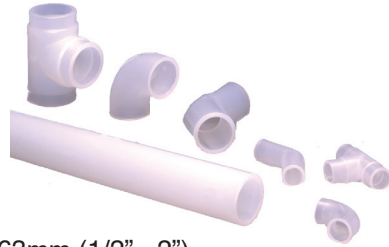
- IR/Butt, Socket, Beadless, Electrofusion

### PolyPure® (Natural PP)

#### Supply Range

#### Pipe and Fittings

- 20 - 110mm (1/2" - 4")  
SDR 11 / PN 10 / 150psi



#### Valves

- T-342 Diaphragm Valves: 20 - 63mm (1/2" - 2")
- T-343 Zero Dead Leg (ZDL) Valve: 20 - 63mm (1/2" - 2")
- Ball Valves: 20 - 63mm (1/2" - 2")
- 3" and 4" Valves: Only available in PP

#### Welding

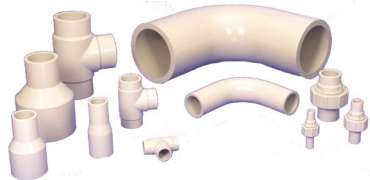
- IR/Butt, Socket, Beadless

### PP-Pure® (Pigmented PP)

#### Supply Range

#### Pipe and Fittings

- 20 - 315mm (1/2" - 12")  
SDR 11 / PN 10 / 150psi



#### Valves

- T-342 Diaphragm Valves: 20 - 110mm (1/2" - 4")
- T-343 Zero Dead Leg (ZDL) Valve: 20 - 63mm (1/2" - 2")
- T-21 Ball Valves: 20 - 110mm (1/2" - 4")

#### Welding

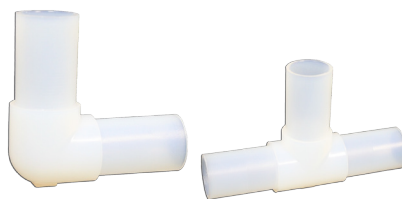
- IR/Butt, Beadless

### Purflon® (PFA)

#### Supply Range

#### Pipe and Fittings

- 20 - 32mm (1/2" - 1")  
SDR 21 / 150psi



### Duo-Pro®

#### Supply Range

- 1x3 through 16x20

**Materials:** Polypropylene, PVDF, & E-CTFE (Halar®)



#### Welding

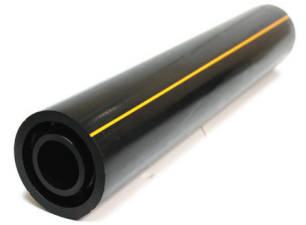
- Simultaneous or Staggered Butt



#### Supply Range

- 1x3 through 12x16

**Materials:** Black PE100



#### Welding

- Simultaneous or Staggered Butt

### Poly-Flo®

#### Supply Range

- 1x2, 2x3, or 4x6

**Materials:** Black Polypropylene & HDPE



#### Welding

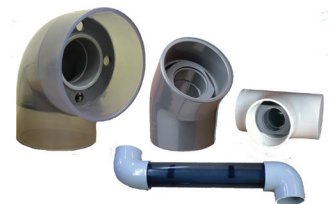
- Simultaneous or Staggered Butt

### Pro-Lock®

#### Supply Range

- 1/2x2 through 4x8

**Materials:** PVC & CPVC



#### Assembly

- Simultaneous or Staggered Glue

### Fluid-Lok®

#### Supply Range

- 1x3 through 18x24

**Materials:** HDPE



#### Welding

- Simultaneous or Staggered Butt

**Welding Equipment Rental Policy**

All rental equipment requires a rental agreement to be signed and completed at the time of order prior to shipping. Rental agreement is to be signed by distributor only.

Please allow 4-5 days from receipt of PO to process all rental equipment orders for shipment.

**Freight:** Customer pays freight from factory to the job site and job site to factory. NO exceptions. Asahi will attempt to combine machines with freight allowed pipe orders but won't guarantee this service.

**Rental Rates:**

- Daily Rates- Are per day, excluding weekends or National holidays.
- Weekly Rates-Are per calendar week or any part of it. We will not prorate partial weeks.
- Monthly Rates-Consist of 4 week period (28 day cycle).
- Partial months-Less than 2 weeks (14 days) will be billed per week at the monthly rate divided by 4.  
Greater than 2 weeks (15 + days) will carry the full monthly charge.

---

**Asahi/America Welding Equipment Freight Insurance Policy Clarification**

Due to the high value of these machines, and the sensitivity of the computers and electronics on them, damage during transportation can become very expensive. Asahi/America recommends insuring all welding equipment to the full replacement value and always accept the package from freight carriers with "possible concealed damage".

The condition of the welding equipment is the responsibility of Asahi until it leaves our facility. All rental and purchased equipment is photographed as packaged for freight pick up. Asahi is not responsible for the condition of the tool upon arrival on site. Asahi will offer customer assistance with procuring this machine insurance at time of order if requested. Customers can also choose their own carriers and insurance companies at time of order, at their cost.

All welding tools/machines are FOB Malden MA, regardless of whether they are for purchase or rental. All freight costs for all machines are the responsibility of the customer. This includes to and from the job site for rental equipment.

Asahi is always willing to work with our customers to keep costs down in today's competitive market. Tool freight costs can be minimized if tools ship with material orders that meet the standard "freight allowed" policy. (Tools ship with orders based on availability) Insurance protocols will still be in effect for automated tools even if shipped with material orders.

If you have any questions regarding this policy please contact your District Manager, or call Customer Service at our Malden, MA headquarters at 1-800-343-3618

Please consult Asahi/America's Welding Equipment Price Sheet for purchase and rental rates for all equipment and options.



## Welding Equipment Catalog #WEC-13

### Warranty

#### TERMS AND CONDITIONS

1. Asahi/America, Inc. ("Asahi") hereby gives notice of its objection to any different or additional terms and conditions except for any such items and conditions as may be expressly accepted by it in writing. The terms and conditions herein **are the final expression of the parties' agreement** and shall supersede any provisions, terms and conditions contained on any confirmation order or other writing buyer may give or receive and rights of the parties shall be governed exclusively by the terms and conditions hereof.
2. Buyer's confirmation is accepted for merchandise selection purpose only. All orders are subject to acceptance by Asahi at its Malden, Massachusetts office and Asahi reserves the right to reject any order in whole or in part without incurring any liability to buyer or any branch or division thereof for such order as may be rejected. Asahi shall have the right at its discretion to limit any credit to be extended hereunder or to require payment before delivery. In the event Asahi should be unable to manufacture or decide not to manufacture any product ordered, Asahi shall notify the buyer, but shall not be liable for any non-delivery of such merchandise. Buyer shall, however, accept delivery and pay for all other merchandise that is included on that order.
3. An order once placed with and accepted by Asahi cannot be cancelled or modified by buyer without Asahi's written consent which, if granted, will be subject to terms that will indemnify Asahi against loss.
4. Asahi does not accept in-store completion dates and cancellation dates will not be accepted on made-to-order product once the order has been put into production.
5. Asahi orders (once accepted) may have backorders when necessary. Backorders are not subject to cancellation by buyer unless 30 days past scheduled delivery date.
6. Delivery shall occur and risk of loss shall pass upon delivery of the merchandise sold hereunder to the carrier. Asahi will use buyer's routing guide or instructions after approval from Asahi's Traffic Department. All customers routing are F.O.B. shipping point. Asahi generates one invoice per shipment and does not include invoices with shipment.
7. The buyer agrees that no shipment from Asahi will be returned from a carrier unless damage or shortages are acknowledged and signed by the carrier's driver. All claims for lost or damaged shipments must be made directly by buyer to the delivering carrier at time of delivery. Shortages due to packing errors must be reported in writing within 10 days of receipt to Asahi's Customer Service Department. Adjustments can be made only if reported to Asahi in writing within that time. Buyer's requests for proof of delivery by Asahi must be made within 30 days of receipt of invoice. After 30 days, the merchandise will be considered as delivered.
8. Written approval from Asahi's home office must be obtained before returning defective merchandise as well as unworn, good quality merchandise of any quantity. Approval will be granted only to return unused, good quality merchandise shipped as a result of Asahi error. All returns must be sent prepaid. Upon approval by Asahi, return authorization numbers which must be visible on the outside carton. Returns not carrying return authorization numbers will be refused delivery by Asahi and returned to senders expense.
9. Buyer agrees that it will not impose upon Asahi any handling, service or any other charges of **that** nature whatsoever.
10. Asahi will not be liable for any delay in performance of orders or contracts, or in delivery or shipment of goods, or for any damage suffered by buyer by reason of such delay in performance of orders or contracts, or in delivery or shipment of goods, or for any damage suffered by buyer by reason of such delay, when such delay is directly or indirectly caused by or in any manner arises from fire, flood, accident, riot, act of God, war, governmental interference or embargoes, strikes, labor difficulties, shortage of labor, fuel, power, materials, or supplies, transportation delays or any other cause or causes (whether or not similar in nature to any of these hereinbefore specified) beyond its control. Asahi reserves the right to discontinue product lines and make changes in products offered at any time.
11. Asahi products are intended to be sold in buyer's outlet(s) as addressed on this order. All branches must be separately approved. Transshipping of merchandise to approved branches of an approved account may not take place without the written approval of Asahi's Malden, MA office.
12. Asahi warrants only that the goods described on the face of the purchase order conform to Asahi's customary quality standards for such goods. Otherwise ASAHI MAKES NO WARRANTIES, EXPRESS OR IMPLIED, WHICH EXTEND BEYOND THE DESCRIPTION ON THE FACE OF THE ORDER. Without limiting the generality of the foregoing, ASAHI SPECIFICALLY EXCLUDES AND DISCLAIMS ANY IMPLIED WARRANTY OR MERCHANTABILITY OR FITNESS FOR A PARTICULAR PURPOSE, APPLICATION OR USE AND ANY IMPLIED WARRANTY AGAINST CLAIMS BY THIRD PARTIES FOR INFRINGEMENT AND THE LIKE. **This warranty constitutes the only warranty given, superseding all prior or contemporaneous oral or written representations. No Seller employee or any other person is authorized to modify this warranty or make any warranty in addition to those set forth herein.**
13. **ASAHI MAKES NO WARRANTIES, EITHER EXPRESSED, IMPLIED OR STATUTORY, INCLUDING ANY IMPLIED WARRANTY OR MERCHANTABILITY OR FITNESS FOR A PARTICULAR PURPOSE, APPLICATION OR USE AND ANY IMPLIED WARRANTY AGAINST CLAIMS BY THIRD PARTIES FOR INFRINGEMENT AND THE LIKE FOR PRODUCTS ORDERED TO CUSTOM SPECIFICATIONS BY THE BUYER, THAT ARE EXPERIMENTAL, DEVELOPMENTAL OR PROTOTYPE PRODUCTS.**
14. Buyer's remedies in the event of any breach by Asahi shall be exclusively limited to the return of the goods and repayment of the price. These remedies are the purchaser's exclusive remedies for breach of warranty. In no event shall buyer be entitled to claim any special, incidental, or consequential damages of any nature, including, but not limited to, loss of anticipated profits and injury to persons or property.
15. Payment terms shall be as set forth on the face of Asahi's invoice to buyer. Terms adjustment will be made upon request of buyer only if shipment is made more than 7 days in advance of buyer's requested ship date. Discounts will not be allowed on late payments. Discounts are applicable on merchandise only and not on freight or service charges. An interest charge of 1 1/2% percent per month (an annual rate of 18%) will be charged in states where legal on the unpaid balance owed together with cost of collection including reasonable attorney's costs. Asahi will charge a \$75.00 minimal order requirement on all orders. Any tax or duty imposed by any government will be added to the sales price.
16. Any waiver of any of these terms of sale by Asahi shall not be construed to be a waiver of the terms and conditions hereof as applied to subsequent transactions.
17. Any controversy or claim arising out of or relating to this agreement or that breach thereof shall be governed by the laws of the Commonwealth of Massachusetts. **Any action or suit must be commenced within one year following delivery of the goods.**

# **Another Corrosion Problem Solved.<sup>TM</sup>**



**35 Green St., Malden, MA 02148  
Tel: 800-343-3618; 781-321-5409**

**Direct Sales: East (800) 232-7244  
Central (800) 442-7244  
West (800) 282-7244**

**Fax: 800-426-7058  
[www.asahi-america.com](http://www.asahi-america.com)  
[asahi@asahi-america.com](mailto:asahi@asahi-america.com)**