



APPLICATIONS

- Steam Tracing
- Drip Leg
- Heating
- Sanitary Applications

SANITIZER NTD 230L SERIES SANITARY THERMODYNAMIC STEAM TRAPS

**Pressures To 150 PSIG (10.3 barg)
Temperatures to 850°F (454°C)**

Sanitary — 316L stainless steel bar stock body, disc and cap, with surface finishes better than 32m in. Ra, prevent contamination and rouging.

Compact Design — Stainless steel disc is the only moving part.

Inexpensive — Low initial cost is less expensive than repairable technologies.

Simplifies Installation — Works in any position.

Rugged — Handles water hammer and superheat.

Reliable, Efficient Operation — Blast discharge quickly draws condensate and helps maintain system temperature.

Freeze resistant — Self draining design with vertical install drain prevents freezing.

All 316L Stainless Steel Construction — Resists both internal and external corrosion.

Easy to Monitor — Audible discharge cycle makes checking operation simple.

MODELS

- NTD 230L—Sanitizer Thermodynamic Steam Trap

NOTE: Please specify if Material Test Reports (MTR) or Certificates of Conformance (COC) are required.

OPERATION

Incoming air and condensate flow through the trap body and into the control chamber. Line pressure raises the disc off the seat, allowing complete discharge. When flashing condensate enters the cartridge, flow velocity increases, creating low pressure underneath the disc. Flashing condensate at high velocity strikes the inside wall of the disc chamber and is deflected to the top of the disc,

causing a pressure buildup. The disc is forced down onto the seat by this pressure imbalance. The trap remains closed as flashed vapor in the control chamber keeps the disc seated. Pressure inside the cap is not lowered until the trapped flash vapor condenses due to body radiation. Condensing steam lowers the pressure above the disc. Disc is then lifted and the cycle repeated.

SANITIZER NTD 230L SERIES SANITARY THERMODYNAMIC STEAM TRAPS

SPECIFICATION

Steam Trap shall be of the thermodynamic design. Body shall be of 316L stainless steel construction. Surface finishes shall exceed 32 μ in. (0.75 μ m) grade. Trap body shall contain an integral seat. Cover shall seal to body without gaskets or seals. Trap shall be suitable for pressures through 150 PSI (10.3 barg). Trap end connections shall be hygienic clamp and accommodate mating connection sizes of 1/2 and 3/4 inch. Trap shall function installed in any pipe configuration.

MAXIMUM OPERATING CONDITIONS

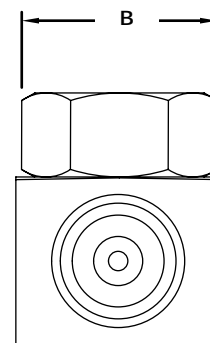
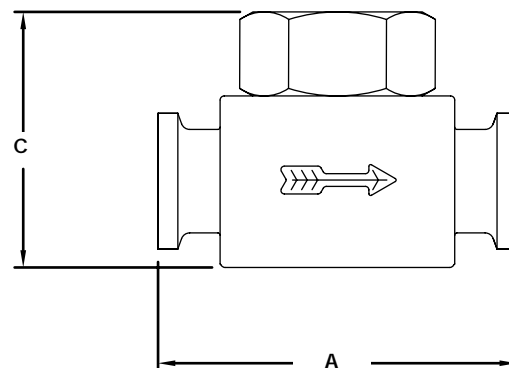
PMO: Max. Operating Pressure	150 psig (10.3 barg)
TMO: Max. Operating Temperature	850°F (454°C)
PMA: Max. Allowable Pressure	230 psig (15.9 barg)
TMA: Max. Allowable Temperature	850°F (454°C)

MATERIALS OF CONSTRUCTION

Body	316L Stainless Steel Bar Stock
Disc	316L Stainless Steel Bar Stock
Cover	316L Stainless Steel Bar Stock

Maximum Capacity — lbs/hr (10°F Below Saturation)							
Orifice	Differential PSIG (barg)						
	5 (0.34)	10 (0.7)	20 (1.4)	50 (3.4)	100 (6.9)	125 (8.6)	150 (10.3)
0.141	215	236	264	345	447	486	521

For Kg/Hr Multiply by .454



Connections: 1/2" / 3/4"
Hygienic Clamp

DIMENSIONS inches (mm) and WEIGHTS pounds (kg)

A	B	C	Weight
2 5/8 (66)	1 1/2 (38)	2 (51)	1.31 (0.59)