



ECKARDT POSITIONER

- Pneumatic or Electro-Pneumatic
- Modular Design
- Boost Adjustable
- Separate Control for Zero Point and Range of Travel

OPTIONS

- Gages

MODELS

P6981 Pneumatic Positioner

EP6986 Electro-pneumatic Positioner

SPECIFICATION

The positioner shall be SIRA and WIB approved and shall be mounted directly onto the valve. Feedback, I/P Transducer and/or Limit Switch options shall be available.

ECKARDT PNEUMATIC POSITIONER W/GAUGES

APPLICATION DATA

- Control of Intimidator Control Valve
- Split Range for Parallel Stations
- Fine Tune Control
- Where Required Air Pressure is Greater than Controller Output
- Where Change of Actuator Action is Desired (Reverse to Direct & vice versa)

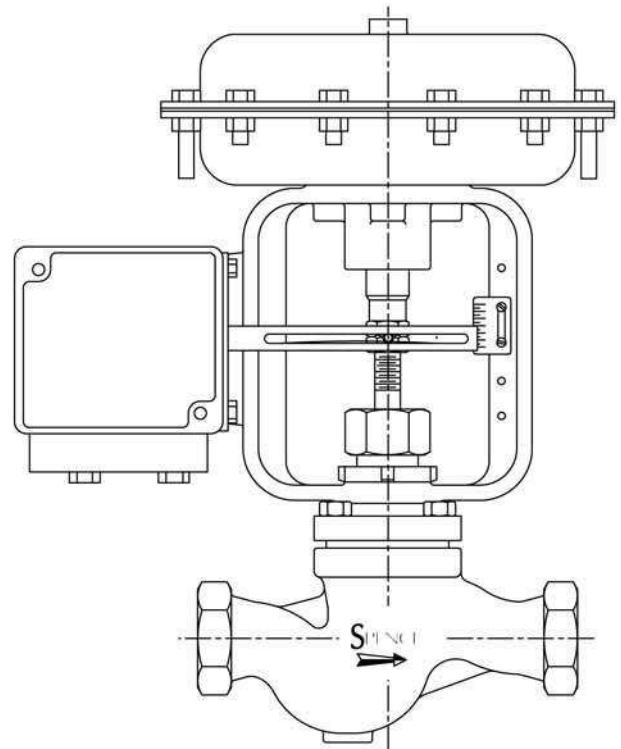
RATINGS

Temperature Range-40 to 176°F (-40 to 80°C)
Pneumatic Connections1/4" NPT
Supply Pressure60 psig
Air Consumption0.11 to 0.21 scfm
Input Signal3-15 psig, Split Range, 4-20mA*
Hysteresis≤0.3%
Body ConstructionAluminum

APPLICABLE CODES

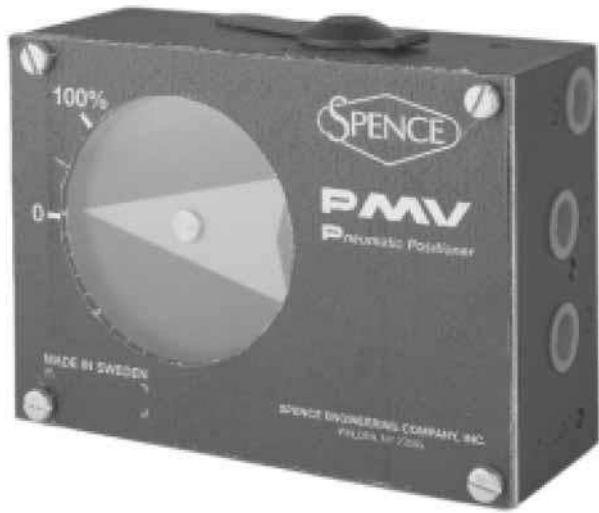
SIRA & WIB Approved

*Applies to EP6986 only



**ECKARDT P6981 POSITIONER
ON INTIMIDATOR TYPE J CONTROL VALVE**

**ECKARDT
POSITIONER**



PMV POSITIONER

- Pneumatic or Electro-Pneumatic
- Compact, Rugged Design
- Easy to Calibrate
- Bright, Visible Indicator
- Low Air Consumption
- Mounts Compactly on Valve
- Stainless Steel Cam
- External Zero Adjustment
- Modular Design

OPTIONS

- Mechanical Limit Switch
- Proximity Limit Switch
- 4-20 mA Position Transmitter Feedback
- Potentiometer 1K Feedback
- Gauges

MODELS

- P5 Pneumatic Positioner w/Gauges
- EP5 Electro-pneumatic Positioner w/Gauges

SPECIFICATION

The Positioner shall be modular and cam characterized with FM, CSA and CENELEC certifications and shall be mounted directly onto the valve. Feedback, I/P Transducer and/or Limit Switch options shall be available.

APPLICATION DATA

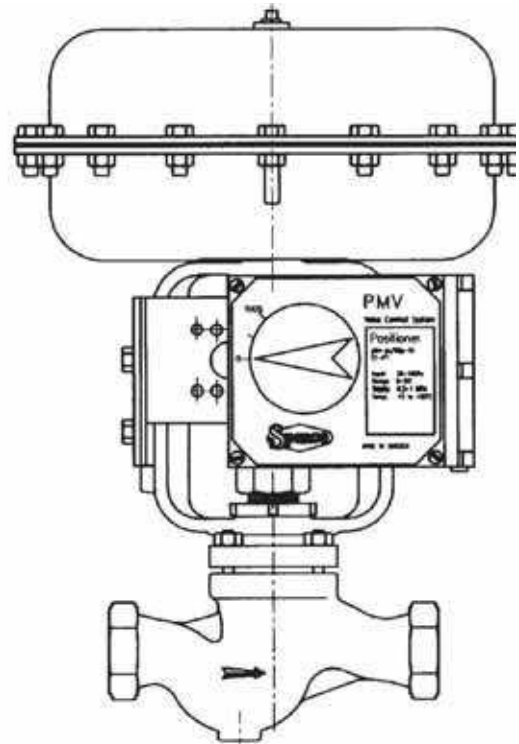
- Control of Intimidator, Boss and Doctor Control Valves
- Split Range for Parallel Stations
- Fine Tune Control
- Where Required Air Pressure is Greater than Controller Output
- Where Change of Actuator Action is Desired (Reverse to Direct & vice versa)

RATINGS

Temperature Range	-4 to 185°F (-20 to 85°C)
Supply Pressure	60 psig
Air Consumption	0.31 scfm (P4) 0.71 scfm (P5) 0.78 scfm (EP5)
Input Signal	3-15 psig, Split Range 4-20 mA
Linearity	±0.7% (P4) ≤0.5% (P5 & EP5)
Hysteresis	0.8% (P4) ≤0.75% (P5) ≤0.5% (EP5)
Body Construction	Aluminum

APPLICABLE CODES

CENELEC, FM & CSA approved



**PMV POSITIONER
ON INTIMIDATOR TYPE J CONTROL VALVE**

MOORE POSITIONER

- Pneumatic or Electro-Pneumatic
- Modular Design
- Cam Characterized for Added Turndown
- Gauges Included
- Proportional Control
- Easy to Calibrate
- Non-Interacting Zero and Span
- Mounts compactly on Valve
- Provides Precise Control

OPTIONS

- Mechanical Limit Switch
- Proximity Limit Switch
- 4-20 mA Position Transmitter Feedback
- Potentiometer 1K Feedback

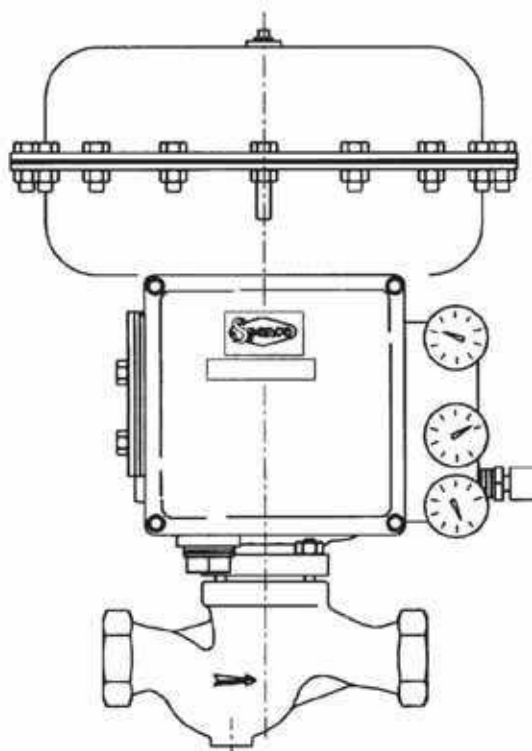
MODELS

760P Pneumatic Positioner

760EP Electro-pneumatic Positioner w/Integral I/P Transducer

SPECIFICATION

The Positioner shall be modular and cam characterized with NEMA 4X, FM, CSA, CENELEC and Sira certifications and shall be mounted directly onto the valve. Feedback, I/P Transducer and/or Limit Switch options shall be available. The Positioner shall include gages, have non-interacting zero and span and consume 0.5 to 0.6 scfm.



**MOORE 760P POSITIONER
ON INTIMIDATOR TYPE J CONTROL VALVE**



MOORE 760P PNEUMATIC POSITIONER

**MOORE
POSITIONER**

APPLICATION DATA

- Control of Intimidator, Boss & Doctor Control Valves
- Split Range for Parallel Stations
- Fine Tune Control
- Where Required Air Pressure is Greater than Controller Output
- Where Change of Actuator Action is Desired (Reverse to Direct & vice versa)

RATINGS

Temperature Range-40 to 185°F (-40 to 85°C)
Pneumatic Connections	...1/4" NPT
Gauge Connections1/8" NPT
Electrical Connections3/4" NPT
Exhaust Connections1/4" NPT
ActionDirect or Reverse
Supply Pressure60 psig
Air Consumption, Typical	...0.5 scfm
Input Signal3-15 psig, Split Range, 4-20 mA*
SpanAdjustable, -60% to +25% of normal
ZeroAdjustable, -10% to +60% of normal
Linearity, Typical0.5% of normal span 0.75% of normal span*
Hysteresis, Typical0.75% of normal span 1.0% of normal span*
Deadband≤0.25% of span

APPLICABLE CODES

NEMA 4X, IP 65
FM, CSA, CENELEC, Sira Approved

*Applies to 760EP only