



## Application

The ARImetec®-D measuring computer is used for flow and differential pressure measurement in hydraulic systems. It has an internal differential pressure sensor with digital processing of measured values. This ensures high accuracy as well as temperature and chronological stability of measurements. The ARImetec®-D processes pre-programmed control characteristics used for hydronic balancing. The flow is derived from measured differential pressure and chosen valve characteristic.

The ARImetec®-D has a real time timing circuit enabling measurement, data logging and processing. Measured values can be analyzed with a PC. When longer period data logging is to be done the ARImetec®-D automatically switches into 'Sleep' mode to save battery power.

## Features

- Compact dimensions and low weight
- Easy operation – concentration on flow and differential pressure measurement
- Data logging for series of measurements
- Manual input of  $k_v$ -value for measuring on valves not stored possible
- USB-interface and cable to transfer measuring values to a PC
- Includes software to analyze and display measuring values
- Supplied in solid plastic case with accessories

## Specifications

<b>Operating pressure</b>	max. 16 bar (232 psi)
<b>Differential pressure</b>	max. 10 bar (145 psi)
<b>Pressure accuracy incl. linearity and hysteresis error</b>	0,15 % nominal range max. 2mbar with software version 5.8 an higher
<b>Temperature error</b>	0,25 % of nominal range
<b>Static pressure influence</b>	0,06 % of nominal range
<b>Medium temperature</b>	-5...90 °C (23...194°F)
<b>Ambient temperature</b>	-5...50 °C (23...122°F)
<b>Storage temperature</b>	+2...70 °C (36...158°F)
<b>Power supply</b>	Battery 6F22; 9V
<b>Consumption</b>	
Operating	max. 10 mA
Connected to PC	max. 15 mA
'Sleep' mode	max. 0,8 mA
<b>Data logging capacity</b>	2,500 records
<b>Data logging period</b>	1 second to 24 hours
<b>Valve memory</b>	170 valves
<b>Interface</b>	USB
<b>Dimensions</b>	77 x 192 x 25 mm
<b>Weight</b>	350 g
<b>Protection class</b>	IP40
<b>Validity of calibration</b>	12 months

## Valve Data

<b>ARI-Armaturen</b>	ASTRA	DN 15 – DN 400
	ASTRA-Plus	DN 15 – DN 400

NOTE: Measurements on other valves by direct input of  $K_v$ -value possible.

## Software-Screenshots

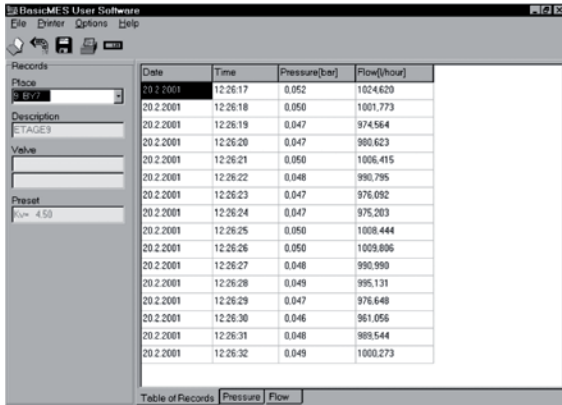


Fig. 1: Table of measured values

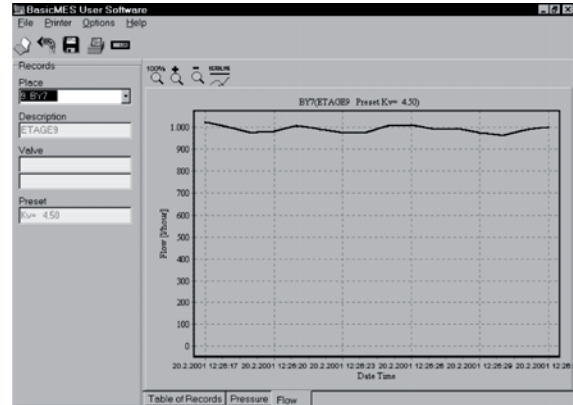


Fig. 3: Flow diagram

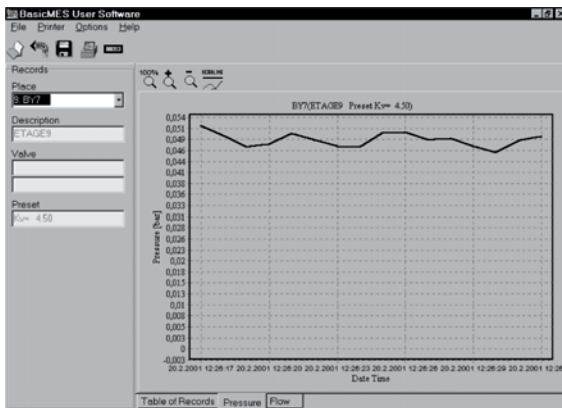


Fig. 2: Pressure diagram

## Accessories

(Supplied with device)

- ARImetec®-D Software on CD-Rom
- 2 Adapters for 1/2" draining valves
- USB interface cable

All accessories are supplied with the ARImetec®-D, packed inside the case.

## Ordering Information

OS-No.: ARImetec®-D



**Technology for the Future.**  
GERMAN QUALITY VALVES