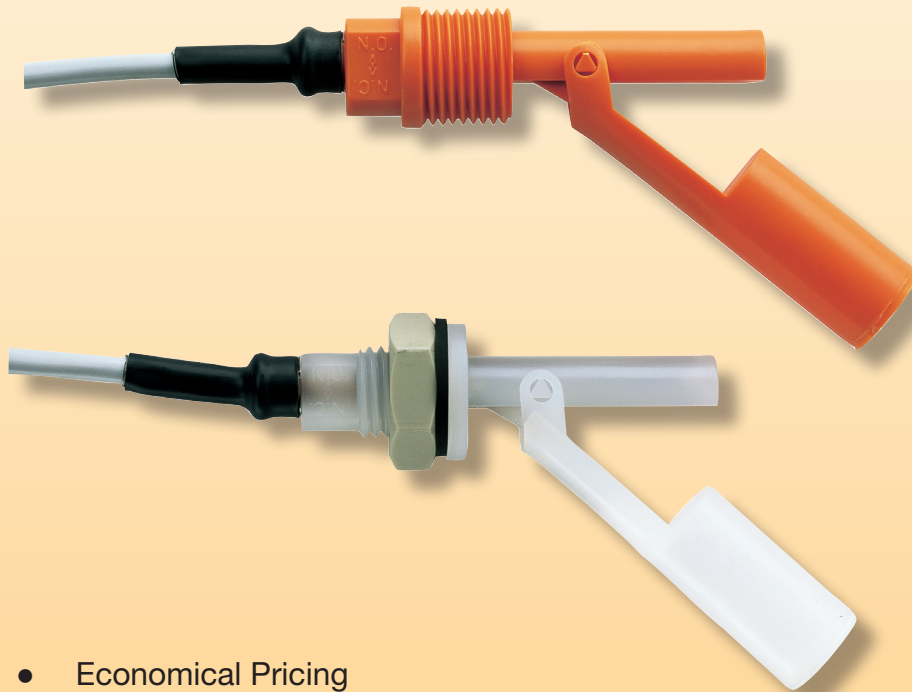


## Level Switch



measuring  
•  
monitoring  
•  
analyzing

NKP



- Economical Pricing
- Excellent Chemical Resistance
- Compact
- Easy to Install
- Hermetically Sealed Reed Switch
- NEMA 6 Protection
- Ideal for Tanks with Inaccessible Tops or Bottoms



KOBOLD companies worldwide:

ARGENTINA, AUSTRIA, BELGIUM, BULGARIA, CANADA, CHILE, CHINA, COLOMBIA, CZECH REPUBLIC, EGYPT, FRANCE, GERMANY, GREAT BRITAIN, HUNGARY, INDIA, INDONESIA, ITALY, MALAYSIA, MEXICO, NETHERLANDS, PERU, POLAND, ROMANIA, SINGAPORE, SOUTH KOREA, SPAIN, SWITZERLAND, TAIWAN, THAILAND, TUNISIA, TURKEY, USA, VIETNAM

KOBOLD Instruments, Inc.  
1801 Parkway View Drive  
Pittsburgh, PA 15205  
☎ Main Office:  
1.800.998.1020  
1.412.788.4890  
✉ info@koboldusa.com  
www.koboldusa.com

**Description**

The KOBOLD NKP is an economical level switch available in polypropylene or PVDF wetted materials allowing for wide compatibility with many aggressive liquids. It is distinguished by its repeatable response, compact size, and high capacity reed switch and is designed for installation into the sidewalls of tanks. The plastic float, containing a magnet, moves as the liquid level rises above or falls below the switchpoint. When the magnet moves close to the reed contact, the switch closes, completing the circuit. The switch function may be changed from normally open to normally closed by merely rotating it 180°. A simple and functional design makes the NKP virtually maintenance free.

**Specifications**

**Materials**

**Float:** Polypropylene or PVDF

**Housing:** Polypropylene or PVDF

**Seal (Bulkhead Only)**

**PP:** NBR

**PVDF:** FKM

**Connection Fitting:** 1/2" NPT or M16 Bulkhead

**Orientation:** Horizontal ± 30°

**Max. Temperature**

**Polypropylene:** 176 °F

**PVDF:** 212 °F

**Max. Pressure:** 145 PSIG

**Min. Liquid Density**

**Polypropylene:** 0.6 S.G

**PVDF:** 0.95 S.G.

**Reed Switch**

**Max. Voltage:** 230 VAC/VDC

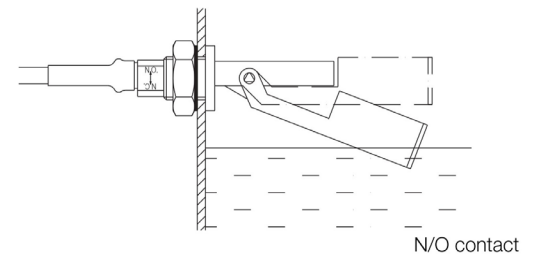
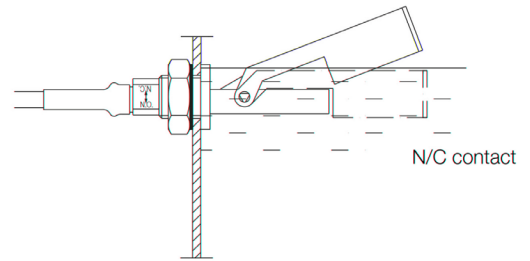
**Max. Current:** 2 A

**Max. Power:** 40 VA

**Cable:** 3 ft, PVC-clad, AWG 20/2

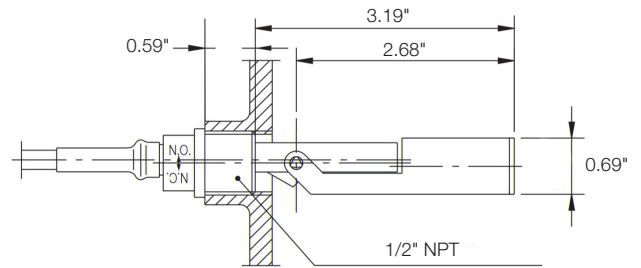
**Protection:** NEMA 6 / IP68

**Switch Function**

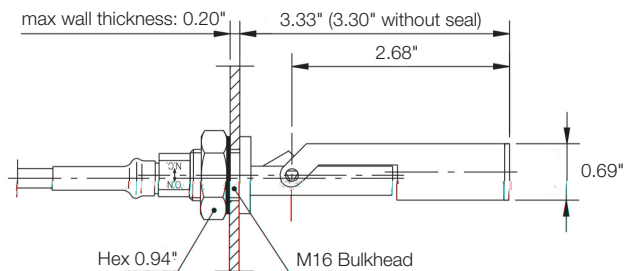


**Dimensions**

**NPT Fitting**



**Bulkhead Fitting**



**Order Details (Example: NKP-2501)**

Fitting	Polypropylene	PVDF
1/2" NPT	NKP-2401	NKP-2501
M16 Bulkhead	NKP-6401	NKP-6501
Optional Cable Length (3 ft Standard)		
..EC10	10 ft (3 m) Cable	
..EC15	15 ft (5 m) Cable	
..EC21	21 ft (6.5 m) Cable	