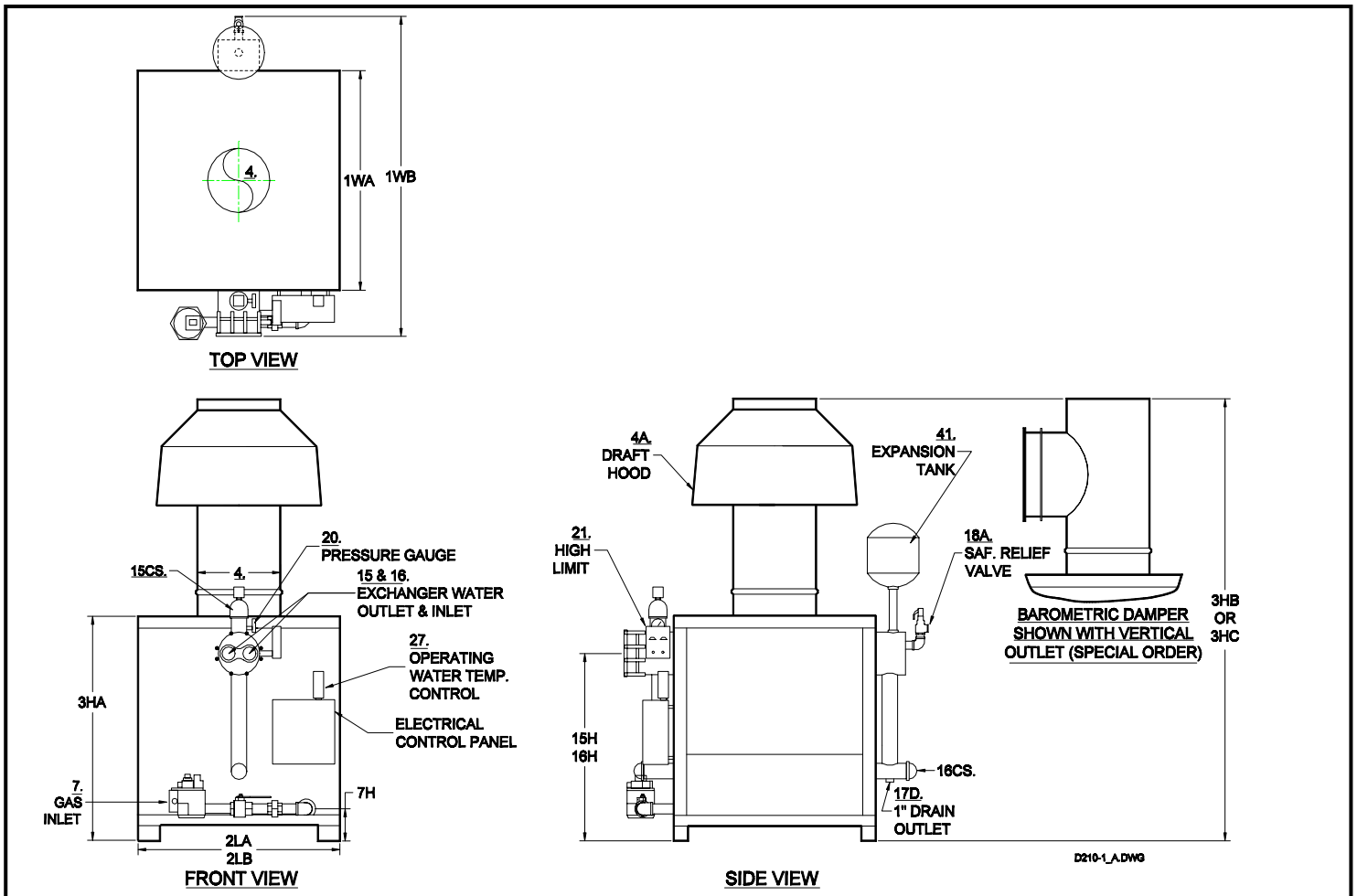


**PARKER INDIRECT FIRED WATER HEATER
WH300 TO WH 1410 - ATMOSPHERIC GAS FIRED**

SPEC. SHEET D-210-I

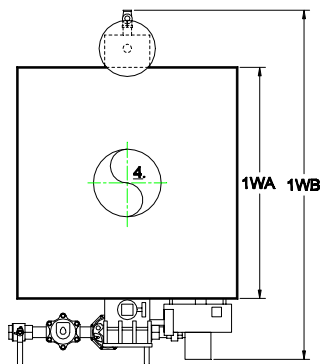
7D



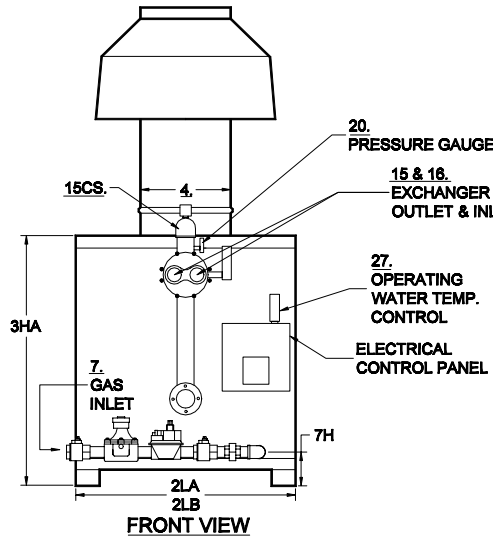
NO.	MODEL NO.		WH300	WH395	WH490	WH600	WH730	WH970	WH1210	WH1410
A	BTU Input	1000's BTU/HR.	300	395	490	600	730	970	1210	1410
B	BTU Output	1000's BTU/HR.	240	316	392	480	584	776	968	1128
C	Heating Surface	SQ. FT.	41.5	55	55	66.5	77	103.5	127.5	160
D	Output - 60 Degree Rise	G.P.H.	480	632	783	958	1167	1550	1935	2253
E	Output - 100 Degree Rise	G.P.H.	288	379	470	575	700	930	1161	1352
1WA	Width of Cabinet Only	IN.	16	21	21	24	27	34	41	49
1WB	Width Overall Including Controls	IN.	33	37	37	41	44	52	59	67
2LA	Length of Cabinet Only	IN.	39	39	39	39	39	39	39	39
2LB	Length Overall	IN.	39	39	39	39	39	39	39	39
3HA	Height of Cabinet Only	IN.	41	41	41	41	41	41	42	42
3HB	Height Overall Including Draft Hood - (Standard)	IN.	71	73	73	75	75	77	82	82
3HC	Height Overall Inclu. Baro. Damper (Vert. Outlet/Horizontal. Outlet) - (Spec.Order)	IN.	57/54	60/58	60/58	60/58	63/60	67/63	68/64	70/68
4A	Vent Stack Diameter with Draft Hood-(Standard)	IN.	8	10	10	12	12	14	16	16
4B	Vent Stack Diameter with Barometric Damper	IN.	6	8	8	8	10	12	12	14
7A / 7A1	Std. Nat. Gas Inlet Size/Supply Press; Max: 14" WC; Min.:7" WC	IN.	3/4	3/4	1	1	1	1-1/2	1-1/2	1-1/2
7A2	Nat. Gas Manifold Pressure at Burner	IN. WC	4	4	4	4	4	4	4	4
7B	Hi Press. Nat. & Propane Gas Inlet Size/(Supply Press. 1-5 PSI)	IN.	3/4	3/4	3/4	3/4	3/4	1-1/2	1-1/2	1-1/2
7B1	Propane Manifold Pressure at Burner	IN. WC	18	18	18	18	18	18	18	18
7H	Gas Inlet Height From Floor	IN.	5	5	5	5	5	5	6	6
15&16	Exchanger Water Outlet and Inlet Size	IN.	1-1/2	1-1/2	1-1/2	1-1/2	1-1/2	2	2	2
15H&16H	Exchanger Water Outlet and Inlet Height From Floor	IN.	34	34	34	34	34	34	35	35
15&16CS	Outlet & Inlet Size for Closed System Heating	IN.	2	2	2	2	2	2	2-1/2	2-1/2
18AHP	Safety Relief Valve Drain Size- 125 PSI	OUTLET IN.	3/4	3/4	3/4	3/4	3/4	3/4	3/4	3/4
18ALP	Safety Relief Valve Drain Size- 30 PSI	OUTLET IN.	3/4	1	1	1	1	1¼	1¼	1½
J	Water Capacity	GAL.	8.5	11	11	13	15	19	21	25
K	Net Weight of Boiler	LBS.	625	790	790	1095	1360	1590	1780	2100
L	Domestic Crated Shipping Weight of Boiler	LBS.	715	885	895	1205	1485	1720	1920	2250
MINIMUM LISTED CLEARANCES TO COMBUSTIBLE CONSTRUCTION:		12" Cabinet Sides & Rear	48" Cabinet Top		6" Draft Hood Vent Connector		12" Baro. Damper Chimney Connector			
Recommended Clearances for Access: Inspection Doors 18";Front (Cabinet Width 1WA + 10" For Exchanger Removal); Controls 24"; Electrical Panel 30"; Additional Space may be required by Local Codes										

Note: All of the above dimensions are for a standard trim model. Due to continuous improvements, specifications are subject to change without notice.

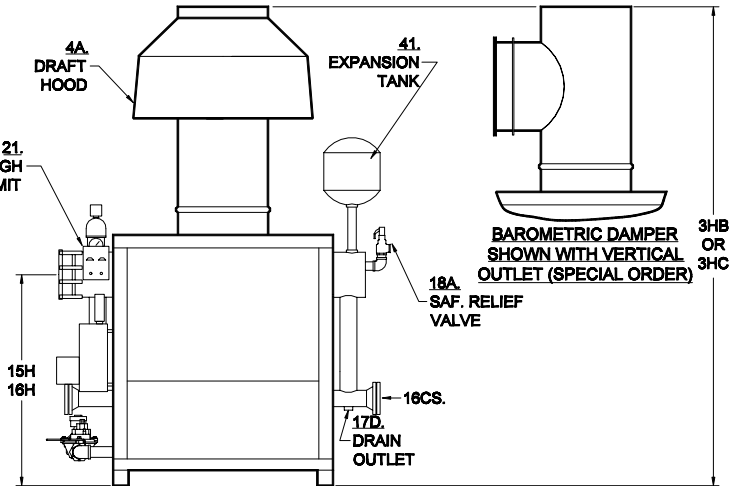
PARKER INDIRECT FIRED WATER HEATER
WH1900 TO WH3000 - ATMOSPHERIC



TOP VIEW



FRONT VIEW



SIDE VIEW

D210-1A_A.DWG

NO.		MODEL NO.	WH1900	WH2270	WH2650	WH3000
A	BTU Input	1000's BTU/HR.	1900	2270	2650	3000
B	BTU Output	1000's BTU/HR.	1520	1816	2120	2400
C	Heating Surface	SQ. FT.	208	251	287	331
D	Output - 60 Degree Rise	G.P.H.	3037	3628	4237	4797
E	Output - 100 Degree Rise	G.P.H.	1822	2177	2542	2878
1WA	Width of Cabinet Only	IN.	40	46	52	59
1WB	Width Overall Including Controls	IN.	63	71	75	82
2LA	Length of Cabinet Only	IN.	54	54	54	54
2LB	Length Overall	IN.	54	54	54	54
3HA	Height of Cabinet Only	IN.	53	53	53	53
3HB	Height Overall Including Draft Hood - (Standard)	IN.	97	99	99	101
3HC	Height Overall Including Baro. Damper (Vert. Outlet/Horizont. Outlet) - (Special Order)	IN.	83 / 82	83 / 82	87 / 84	87 / 84
4A	Vent Stack Diameter with Draft Hood - (Standard)	IN.	20	22	22	24
4B	Vent Stack Diameter with Barometric Damper	IN.	16	16	18	18
7A/ 7A1	Std. Nat. Gas Inlet Size / Supply Press; Max: 14" WC; Min.: 7" WC	IN.	2	2	2	2
7A2	Nat. Gas Manifold Pressure at Burner	IN. WC	4	4	4	4
7B	Hi Press. Nat. & Propane Gas Inlet Size (Supply Press. 1-5 PSI)	IN.	1-1/2	1-1/2	1-1/2	1-1/2
7B1	Propane Manifold Pressure at Burner:	IN. WC	18	18	18	18
7H	Gas Inlet Height From Floor	IN.	5	5	5	5
15&16	Exchanger Water Outlet and Inlet Size	IN.	2-1/2	2-1/2	2-1/2	2-1/2
15H&16H	Exchanger Water Outlet and Inlet Height From Floor	IN.	44	44	44	44
15&16CS	Outlet & Inlet Size for Closed System Heating	IN.	3	3	3	3
17D	Drain Opening	IN.	1-1/4	1-1/2	1-1/2	1-1/2
18AHP	Safety Relief Valve Drain Size- 125 PSI	OUTLET IN.	1	1	1	1-1/4
18ALP	Safety Relief Valve Drain Size- 30 PSI	OUTLET IN.	1-1/2	2	2	2
J	Water Capacity	GAL.	30	35	40	50
K	Net Weight of Boiler	LBS.	2695	3150	3575	3940
L	Domestic Crated Shipping Weight of Boiler	LBS.	2945	3450	3925	4380

MINIMUM LISTED CLEARANCES TO	12"	48"	6"	12"
COMBUSTIBLE CONSTRUCTION:	Cabinet Sides & Rear	Cabinet Top	Draft Hood Vent Connector	Baro. Damper Chimney Connector
Recommended Clearances for Access: Inspection Doors 18"; Front (Cabinet Width 1WA + 10" For Exchanger Removal); Controls 24"; Electrical Panel 30"; Additional Space may be required by Local Codes				

Note: All of the above dimensions are for a standard trim model. Due to continuous improvement, specifications are subject to change without notice