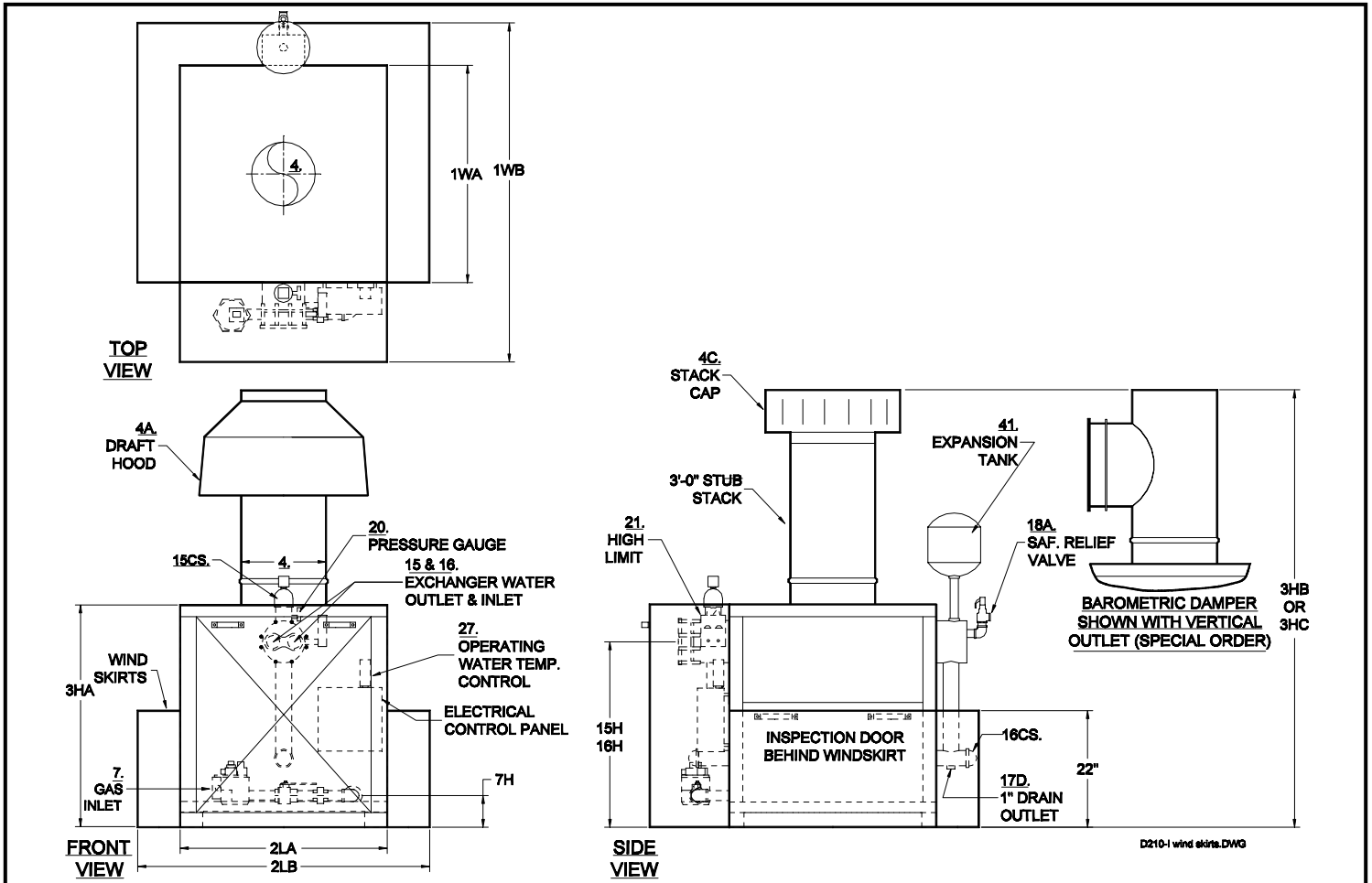


# PARKER INDIRECT FIRED WATER HEATER WH300 TO WH1410 - ATMOSPHERIC GAS FIRED - OUTDOOR MODEL

SPEC. SHEET D-210-IE

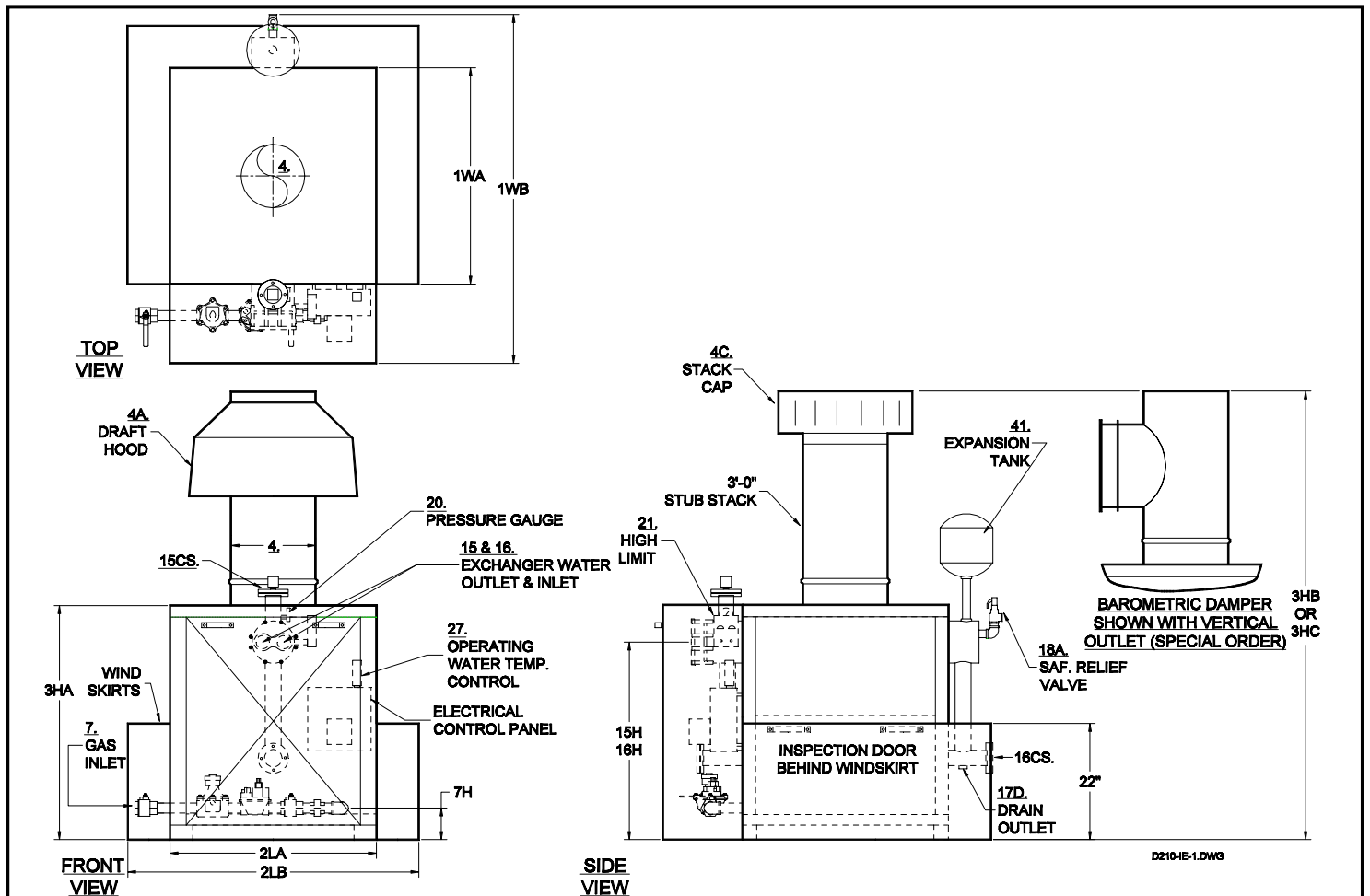
8D



| NO.                                                                                                                                                                                                | MODEL NO.                                                                    |                      | WH300       | WH395                     | WH490 | WH600 | WH730                          | WH970 | WH1210 | WH1410 |
|----------------------------------------------------------------------------------------------------------------------------------------------------------------------------------------------------|------------------------------------------------------------------------------|----------------------|-------------|---------------------------|-------|-------|--------------------------------|-------|--------|--------|
| A                                                                                                                                                                                                  | BTU Input                                                                    | 1000's BTU/HR.       | 300         | 395                       | 490   | 600   | 730                            | 970   | 1210   | 1410   |
| B                                                                                                                                                                                                  | BTU Output                                                                   | 1000's BTU/HR.       | 240         | 316                       | 392   | 480   | 584                            | 776   | 968    | 1128   |
| C                                                                                                                                                                                                  | Heating Surface                                                              | SQ. FT.              | 41.5        | 55                        | 55    | 66.5  | 77                             | 103.5 | 127.5  | 160    |
| D                                                                                                                                                                                                  | Output - 60 Degree Rise                                                      | G.P.H.               | 480         | 632                       | 783   | 958   | 1167                           | 1550  | 1935   | 2253   |
| E                                                                                                                                                                                                  | Output - 100 Degree Rise                                                     | G.P.H.               | 288         | 379                       | 470   | 575   | 700                            | 930   | 1161   | 1352   |
| 1WA                                                                                                                                                                                                | Width of Cabinet Only                                                        | IN.                  | 16          | 21                        | 21    | 24    | 27                             | 34    | 41     | 49     |
| 1WB                                                                                                                                                                                                | Width Overall Including Wind Skirts                                          | IN.                  | 39          | 44                        | 44    | 47    | 50                             | 57    | 64     | 72     |
| 2LA                                                                                                                                                                                                | Length of Cabinet Only                                                       | IN.                  | 39          | 39                        | 39    | 39    | 39                             | 39    | 39     | 39     |
| 2LB                                                                                                                                                                                                | Length Overall Including Wind Skirts                                         | IN.                  | 55          | 55                        | 55    | 55    | 55                             | 55    | 55     | 55     |
| 3HA                                                                                                                                                                                                | Height of Cabinet Only                                                       | IN.                  | 41          | 41                        | 41    | 41    | 41                             | 41    | 42     | 42     |
| 3HB                                                                                                                                                                                                | Ht. Overall Inclu. Draft Hood - (Std) / 3'-0" Stub Stack w/Americap          | IN.                  | 71/88       | 73/90                     | 73/90 | 75/92 | 75/92                          | 77/95 | 82/97  | 82/97  |
| 3HC                                                                                                                                                                                                | Height Overall Inclu. Baro. Damper (Vert. / Horizont. Outlet) - (Spec.Order) | IN.                  | 57/54       | 60/58                     | 60/58 | 60/58 | 63/60                          | 67/63 | 68/64  | 70/68  |
| 4A,C                                                                                                                                                                                               | Vent Stack Diameter with Draft Hood - (Std) or Americap                      | IN.                  | 8           | 10                        | 10    | 12    | 12                             | 14    | 16     | 16     |
| 4B                                                                                                                                                                                                 | Vent Stack Diameter with Barometric Damper                                   | IN.                  | 6           | 8                         | 8     | 8     | 10                             | 12    | 12     | 14     |
| 7A / 7A1                                                                                                                                                                                           | Std. Nat. Gas Inlet Size/Supply Press; Max: 14" WC; Min.: 7"WC               | IN.                  | 3/4         | 3/4                       | 1     | 1     | 1                              | 1-1/2 | 1-1/2  | 1-1/2  |
| 7A2                                                                                                                                                                                                | Nat. Gas Manifold Pressure at Burner                                         | IN. WC               | 4           | 4                         | 4     | 4     | 4                              | 4     | 4      | 4      |
| 7B                                                                                                                                                                                                 | Hi Press. Nat. & Propane Gas Inlet Size/(Supply Press. 1-5 PSI)              | IN.                  | 3/4         | 3/4                       | 3/4   | 3/4   | 3/4                            | 1-1/2 | 1-1/2  | 1-1/2  |
| 7B1                                                                                                                                                                                                | Propane Manifold Pressure at Burner                                          | IN. WC               | 18          | 18                        | 18    | 18    | 18                             | 18    | 18     | 18     |
| 7H                                                                                                                                                                                                 | Gas Inlet Height From Floor                                                  | IN.                  | 5           | 5                         | 5     | 5     | 5                              | 5     | 6      | 6      |
| 15&16                                                                                                                                                                                              | Exchanger Water Outlet and Inlet Size                                        | IN.                  | 1-1/2       | 1-1/2                     | 1-1/2 | 1-1/2 | 1-1/2                          | 2     | 2      | 2      |
| 15H&16H                                                                                                                                                                                            | Exchanger Water Outlet and Inlet Height From Floor                           | IN.                  | 34          | 34                        | 34    | 34    | 34                             | 34    | 35     | 35     |
| 15&16CS                                                                                                                                                                                            | Outlet & Inlet Size for Closed System Heating                                | IN.                  | 2           | 2                         | 2     | 2     | 2                              | 2     | 2-1/2  | 2-1/2  |
| 18AHP                                                                                                                                                                                              | Safety Relief Valve Drain Size- 125 PSI                                      | OUTLET IN.           | 3/4         | 3/4                       | 3/4   | 3/4   | 3/4                            | 3/4   | 3/4    | 3/4    |
| 18ALP                                                                                                                                                                                              | Safety Relief Valve Drain Size- 30 PSI                                       | OUTLET IN.           | 3/4         | 1                         | 1     | 1     | 1                              | 1¼    | 1¼     | 1½     |
| J                                                                                                                                                                                                  | Water Capacity                                                               | GAL.                 | 8.5         | 11                        | 11    | 13    | 15                             | 19    | 21     | 25     |
| K                                                                                                                                                                                                  | Net Weight of Boiler                                                         | LBS.                 | 729         | 898                       | 898   | 1205  | 1473                           | 1709  | 1906   | 2233   |
| L                                                                                                                                                                                                  | Domestic Crated Shipping Weight of Boiler                                    | LBS.                 | 819         | 993                       | 1003  | 1315  | 1598                           | 1839  | 2046   | 2383   |
| MINIMUM LISTED CLEARANCES TO COMBUSTIBLE CONSTRUCTION:                                                                                                                                             |                                                                              | 12"                  | 48"         | 6"                        |       |       | 12"                            |       |        |        |
|                                                                                                                                                                                                    |                                                                              | Cabinet Sides & Rear | Cabinet Top | Draft Hood Vent Connector |       |       | Baro. Damper Chimney Connector |       |        |        |
| Recommended Clearances for Access: Inspection Doors 18";Front (Cabinet Width 1WA + 10" For Exchanger Removal); Controls 24"; Electrical Panel 30"; Additional Space may be required by Local Codes |                                                                              |                      |             |                           |       |       |                                |       |        |        |

Note: All of the above dimensions are for a standard trim model. Due to continuous improvements, specifications are subject to change without notice.

D-210-ie.DOC



| NO.      |                                                                                           | MODEL NO.      | WH1900   | WH2270   | WH2650   | WH3000    |
|----------|-------------------------------------------------------------------------------------------|----------------|----------|----------|----------|-----------|
| A        | BTU Input                                                                                 | 1000's BTU/HR. | 1900     | 2270     | 2650     | 3000      |
| B        | BTU Output                                                                                | 1000's BTU/HR. | 1520     | 1816     | 2120     | 2400      |
| C        | Heating Surface                                                                           | SQ. FT.        | 208      | 251      | 287      | 331       |
| D        | Output - 60 Degree Rise                                                                   | G.P.H.         | 3037     | 3628     | 4237     | 4797      |
| E        | Output - 100 Degree Rise                                                                  | G.P.H.         | 1822     | 2177     | 2542     | 2878      |
| 1WA      | Width of Cabinet Only                                                                     | IN.            | 40       | 46       | 52       | 59        |
| 1WB      | Width Overall Including Controls                                                          | IN.            | 69       | 77       | 81       | 88        |
| 2LA      | Length of Cabinet Only                                                                    | IN.            | 54       | 54       | 54       | 54        |
| 2LB      | Length Overall Including Wind Skirts                                                      | IN.            | 70       | 70       | 70       | 70        |
| 3HA      | Height of Cabinet Only                                                                    | IN.            | 53       | 53       | 53       | 53        |
| 3HB      | Height Overall Including Draft Hood - (Std) / 3'-0" Stub Stack w/ Americap                | IN.            | 97 / 112 | 99 / 114 | 99 / 114 | 101 / 115 |
| 3HC      | Height Overall Including Baro. Damper (Vert. Outlet/Horizontal. Outlet) - (Special Order) | IN.            | 83 / 82  | 83 / 82  | 87 / 84  | 87 / 84   |
| 4A,C     | Vent Stack Diameter with Draft Hood - (Std) or Americap                                   | IN.            | 20       | 22       | 22       | 24        |
| 4B       | Vent Stack Diameter with Barometric Damper                                                | IN.            | 16       | 16       | 18       | 18        |
| 7A / 7A1 | Std. Nat. Gas Inlet Size / Supply Press; Max: 14" WC; Min.: 7" WC                         | IN.            | 2        | 2        | 2        | 2         |
| 7A2      | Nat. Gas Manifold Pressure at Burner                                                      | IN. WC         | 4        | 4        | 4        | 4         |
| 7B       | Hi Press. Nat. & Propane Gas Inlet Size (Supply Press. 1-5 PSI)                           | IN.            | 1-1/2    | 1-1/2    | 1-1/2    | 1-1/2     |
| 7B1      | Propane Manifold Pressure at Burner:                                                      | IN. WC         | 18       | 18       | 18       | 18        |
| 7H       | Gas Inlet Height From Floor                                                               | IN.            | 5        | 5        | 5        | 5         |
| 15&16    | Exchanger Water Outlet and Inlet Size                                                     | IN.            | 2-1/2    | 2-1/2    | 2-1/2    | 2-1/2     |
| 15H&16H  | Exchanger Water Outlet and Inlet Height From Floor                                        | IN.            | 44       | 44       | 44       | 44        |
| 15&16CS  | Outlet & Inlet Size for Closed System Heating                                             | IN.            | 3        | 3        | 3        | 3         |
| 17D      | Drain Opening                                                                             | IN.            | 1-1/4    | 1-1/2    | 1-1/2    | 1-1/2     |
| 18AHP    | Safety Relief Valve Drain Size- 125 PSI                                                   | OUTLET IN.     | 1        | 1        | 1        | 1-1/4     |
| 18ALP    | Safety Relief Valve Drain Size- 30 PSI                                                    | OUTLET IN.     | 1-1/2    | 2        | 2        | 2         |
| J        | Water Capacity                                                                            | GAL.           | 30       | 35       | 40       | 50        |
| K        | Net Weight of Boiler                                                                      | LBS.           | 2863     | 3323     | 3754     | 4125      |
| L        | Domestic Crated Shipping Weight of Boiler                                                 | LBS.           | 3113     | 3623     | 4104     | 4565      |

|                                                                                                                                                                                                     |                      |             |                           |                                |
|-----------------------------------------------------------------------------------------------------------------------------------------------------------------------------------------------------|----------------------|-------------|---------------------------|--------------------------------|
| MINIMUM LISTED CLEARANCES TO COMBUSTIBLE CONSTRUCTION:                                                                                                                                              | 12"                  | 48"         | 6"                        | 12"                            |
|                                                                                                                                                                                                     | Cabinet Sides & Rear | Cabinet Top | Draft Hood Vent Connector | Baro. Damper Chimney Connector |
| Recommended Clearances for Access: Inspection Doors 18"; Front (Cabinet Width 1WA + 10" For Exchanger Removal); Controls 24"; Electrical Panel 30"; Additional Space may be required by Local Codes |                      |             |                           |                                |

Note: All of the above dimensions are for a standard trim model. Due to continuous improvement, specifications are subject to change without notice.