

Local Remote Stations



PK-100

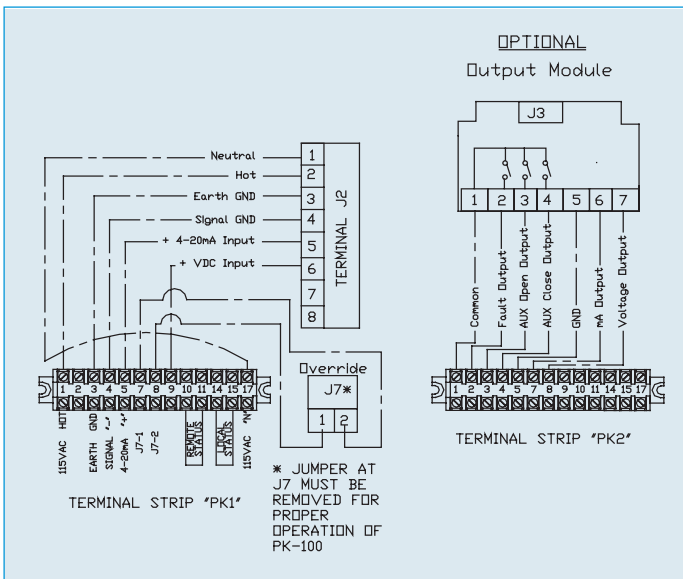
PK-100 is to be used in conjunction with Series 92 or 94, ac powered and DHC-Series positioner card

Standard Features

- Type 4X Enclosure Constructed of Fiberglass Polyester
- Stainless Steel Trim
- Captive Cover Gasket
- Captive Cover Screws
- Two (2) Position Selector Switch (open and close)
- Two (2) Position Selector Switch (local/remote)
- 40°F - 266°F Temperature Range

Options

- Type 7 Enclosure
- 316 Stainless Steel Enclosure
- Contact Factory for Specific Applications



Note:

1. Local Remote Station is not close coupled to actuator. Field wiring of local remote station to actuator is to be performed by others.



LL-200

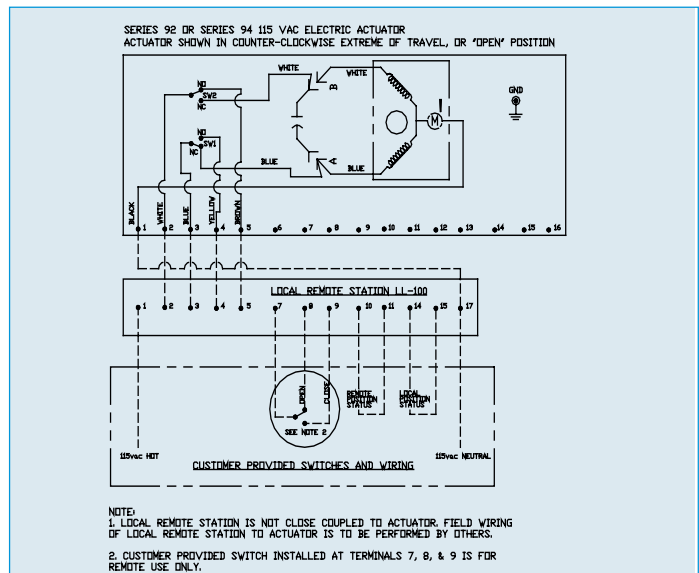
LL-200 is to be used in conjunction with Series 92 or 94, ac powered and On/Off actuator

Standard Features

- Visual Light Indication
- Type 4X Enclosure Constructed of Fiberglass Polyester
- Stainless Steel Trim
- Captive Cover Gasket
- Captive Cover Screws
- Two (2) Position Selector Switch (open and close)
- Three (3) Position Selector Switch (hand, off, auto)
- 40°F - 266°F Temperature Range
- Can be used with any Electric Actuator (must specify before placing order)

Options

- Type 7 Enclosure
- 316 Stainless Steel Enclosure
- Contact Factory for Specific Applications



NOTE:

1. Local Remote Station is not close coupled to actuator, field wiring of local remote station to actuator is to be performed by others.
2. Customer provided switch installed at Terminals 7, 8, & 9 is for remote use only.